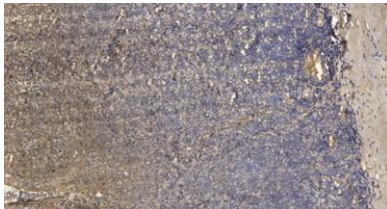


**MLC-2 rabbit pAb****Cat#: orb767401 (Manual)**

For research use only. Not intended for diagnostic use.

<b>Product Name</b>	MLC-2 rabbit pAb
<b>Host species</b>	Rabbit
<b>Applications</b>	IHC;IF;ELISA
<b>Species Cross-Reactivity</b>	Human;Mouse;Rat
<b>Recommended dilutions</b>	WB 1:500-2000 ,Immunohistochemistry: 1/100 - 1/300. Immunofluorescence: 1/200 - 1/1000. ELISA: 1/5000. Not yet tested in other applications.
<b>Immunogen</b>	The antiserum was produced against synthesized peptide derived from human MLC-2. AA range:5-54
<b>Specificity</b>	MLC-2 Polyclonal Antibody detects endogenous levels of MLC-2 protein.
<b>Formulation</b>	Liquid in PBS containing 50% glycerol, 0.5% BSA and 0.02% sodium azide..
<b>Storage</b>	Store at -20°C. Avoid repeated freeze-thaw cycles.
<b>Protein Name</b>	Myosin regulatory light chain 12A
<b>Gene Name</b>	MYL12A
<b>Cellular localization</b>	stress fiber,cytosol,brush border,myosin complex,myosin II complex,Z disc,apical part of cell,extracellular exosome,
<b>Purification</b>	The antibody was affinity-purified from rabbit antiserum by affinity-chromatography using epitope-specific immunogen.
<b>Clonality</b>	Polyclonal

<b>Concentration</b>	1 mg/ml
<b>Observed band</b>	
<b>Human Gene ID</b>	10398/10627
<b>Human Swiss-Prot Number</b>	P19105/O14950/P24844
<b>Alternative Names</b>	MYL12A; MLCB; MRLC3; RLC; Myosin regulatory light chain 12A; MLC-2B; Myosin RLC; Myosin regulatory light chain 2; nonsarcomeric; Myosin regulatory light chain MRLC3; MYL12B; MRLC2; MYLC2B; Myosin regulatory light chain 12B; MLC-2A; MLC-2; M
<b>Background</b>	This gene encodes a nonsarcomeric myosin regulatory light chain. This protein is activated by phosphorylation and regulates smooth muscle and non-muscle cell contraction. This protein may also be involved in DNA damage repair by sequestering the transcriptional regulator apoptosis-antagonizing transcription factor (AATF)/Che-1 which functions as a repressor of p53-driven apoptosis. Alternate splicing results in multiple transcript variants. A pseudogene of this gene is found on chromosome 8.[provided by RefSeq, Dec 2014],



**Immunohistochemical analysis of paraffin-embedded human tonsil. 1, Antibody was diluted at 1:200(4<sup>o</sup> overnight). 2, Tris-EDTA,pH9.0 was used for antigen retrieval. 3,Secondary antibody was diluted at 1:200(room temperature, 30min).**