

MLC-2 (phospho Thr17/S18) rabbit pAb**Cat#: orb767400 (Manual)**

For research use only. Not intended for diagnostic use.

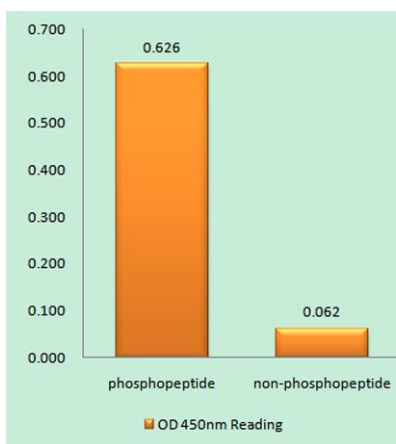
Product Name	MLC-2 (phospho Thr17/S18) rabbit pAb
Host species	Rabbit
Applications	IHC;IF;ELISA
Species Cross-Reactivity	Human;Mouse;Rat
Recommended dilutions	WB 1:500-2000 ,Immunohistochemistry: 1/100 - 1/300. ELISA: 1/10000. Not yet tested in other applications.
Immunogen	The antiserum was produced against synthesized peptide derived from human MLC-2 around the phosphorylation site of Thr17 and Ser18. AA range:5-54
Specificity	Phospho-MLC-2 (T17/S18) Polyclonal Antibody detects endogenous levels of MLC-2 protein only when phosphorylated at T17/S18.
Formulation	Liquid in PBS containing 50% glycerol, 0.5% BSA and 0.02% sodium azide..
Storage	Store at -20°C. Avoid repeated freeze-thaw cycles.
Protein Name	Myosin regulatory light chain 12A
Gene Name	MYL12A
Cellular localization	stress fiber,cytosol,brush border,myosin complex,myosin II complex,Z disc,apical part of cell,extracellular exosome,
Purification	The antibody was affinity-purified from rabbit antiserum by affinity-chromatography using epitope-specific immunogen.
Clonality	Polyclonal

Explore. Bioreagents.

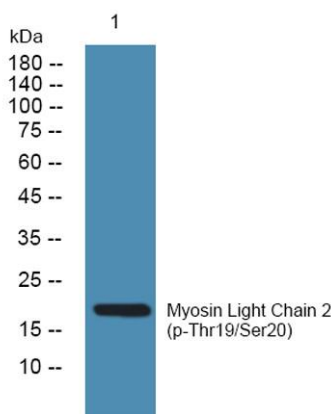
Concentration	1 mg/ml
Observed band	
Human Gene ID	10398/10627
Human Swiss-Prot Number	P19105/O14950/P24844
Alternative Names	MYL12A; MLCB; MRLC3; RLC; Myosin regulatory light chain 12A; MLC-2B; Myosin RLC; Myosin regulatory light chain 2; nonsarcomeric; Myosin regulatory light chain MRLC3; MYL12B; MRLC2; MYLC2B; Myosin regulatory light chain 12B; MLC-2A; MLC-2; M

Background

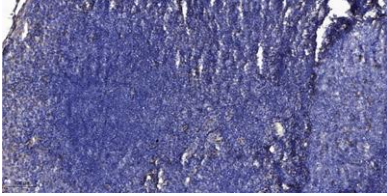
This gene encodes a nonsarcomeric myosin regulatory light chain. This protein is activated by phosphorylation and regulates smooth muscle and non-muscle cell contraction. This protein may also be involved in DNA damage repair by sequestering the transcriptional regulator apoptosis-antagonizing transcription factor (AATF)/Che-1 which functions as a repressor of p53-driven apoptosis. Alternate splicing results in multiple transcript variants. A pseudogene of this gene is found on chromosome 8.[provided by RefSeq, Dec 2014],



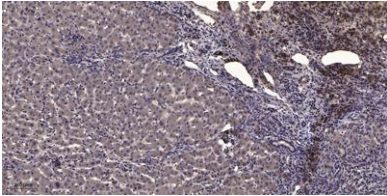
Enzyme-Linked Immunosorbent Assay (Phospho-ELISA) for Immunogen Phosphopeptide (Phospho-left) and Non-Phosphopeptide (Phospho-right), using MLC-2 (Phospho-Thr17+Ser18) Antibody



Western blot analysis of lysates from SW480 cells, primary antibody was diluted at 1:1000, 4° over night



Immunohistochemical analysis of paraffin-embedded human tonsil. 1, Antibody was diluted at 1:200(4° overnight). 2, Tris-EDTA,pH9.0 was used for antigen retrieval. 3,Secondary antibody was diluted at 1:200(room temperature, 30min).



Immunohistochemical analysis of paraffin-embedded human liver cancer. 1, Antibody was diluted at 1:200(4° overnight). 2, Tris-EDTA,pH9.0 was used for antigen retrieval. 3,Secondary antibody was diluted at 1:200(room temperature, 45min).