

TIP60 (phospho Ser90) rabbit pAb**Cat#: orb767371 (Manual)**

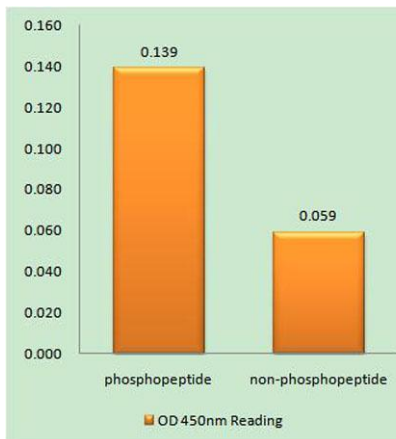
For research use only. Not intended for diagnostic use.

Product Name	TIP60 (phospho Ser90) rabbit pAb
Host species	Rabbit
Applications	IHC;IF;ELISA
Species Cross-Reactivity	Human;Mouse;Rat
Recommended dilutions	Immunohistochemistry: 1/100 - 1/300. ELISA: 1/5000. Not yet tested in other applications.
Immunogen	The antiserum was produced against synthesized peptide derived from human Tip60 around the phosphorylation site of Ser90. AA range:56-105
Specificity	Phospho-TIP60 (S90) Polyclonal Antibody detects endogenous levels of TIP60 protein only when phosphorylated at S90.
Formulation	Liquid in PBS containing 50% glycerol, 0.5% BSA and 0.02% sodium azide..
Storage	Store at -20°C. Avoid repeated freeze-thaw cycles.
Protein Name	Histone acetyltransferase KAT5
Gene Name	KAT5
Cellular localization	Nucleus . Chromosome . Cytoplasm . Chromosome, centromere, kinetochore . Cytoplasm, cytoskeleton, spindle pole . Nucleus, nucleolus . Cytoplasm, perinuclear region . Upon stimulation with EDN1, it is exported from the nucleus to the perinuclear region and
Purification	The antibody was affinity-purified from rabbit antiserum by affinity-chromatography using epitope-specific immunogen.

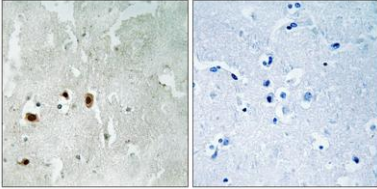
Clonality	Polyclonal
Concentration	1 mg/ml
Observed band	
Human Gene ID	10524
Human Swiss-Prot Number	Q92993
Alternative Names	KAT5; HTATIP; TIP60; Histone acetyltransferase KAT5; 60 kDa Tat-interactive protein; Tip60; Histone acetyltransferase HTATIP; HIV-1 Tat interactive protein; Lysine acetyltransferase 5; cPLA(2)-interacting protein

Background

The protein encoded by this gene belongs to the MYST family of histone acetyl transferases (HATs) and was originally isolated as an HIV-1 TAT-interactive protein. HATs play important roles in regulating chromatin remodeling, transcription and other nuclear processes by acetylating histone and nonhistone proteins. This protein is a histone acetylase that has a role in DNA repair and apoptosis and is thought to play an important role in signal transduction. Alternative splicing of this gene results in multiple transcript variants. [provided by RefSeq, Jul 2008],



Enzyme-Linked Immunosorbent Assay (Phospho-ELISA) for Immunogen Phosphopeptide (Phospho-left) and Non-Phosphopeptide (Phospho-right), using Tip60 (Phospho-Ser90) Antibody



Immunohistochemistry analysis of paraffin-embedded human brain, using Tip60 (Phospho-Ser90) Antibody. The picture on the right is blocked with the phospho peptide.