

**NHE-6 rabbit pAb****Cat#: orb767357 (Manual)**

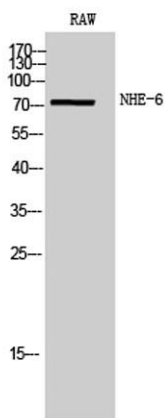
For research use only. Not intended for diagnostic use.

<b>Product Name</b>	NHE-6 rabbit pAb
<b>Host species</b>	Rabbit
<b>Applications</b>	WB;ELISA
<b>Species Cross-Reactivity</b>	Human;Mouse
<b>Recommended dilutions</b>	Western Blot: 1/500 - 1/2000. ELISA: 1/40000. Not yet tested in other applications.
<b>Immunogen</b>	The antiserum was produced against synthesized peptide derived from human SLC9A6. AA range:551-600
<b>Specificity</b>	NHE-6 Polyclonal Antibody detects endogenous levels of NHE-6 protein.
<b>Formulation</b>	Liquid in PBS containing 50% glycerol, 0.5% BSA and 0.02% sodium azide..
<b>Storage</b>	Store at -20°C. Avoid repeated freeze-thaw cycles.
<b>Protein Name</b>	Sodium/hydrogen exchanger 6
<b>Gene Name</b>	SLC9A6
<b>Cellular localization</b>	Endosome membrane ; Multi-pass membrane protein . Is present in the recycling compartments including early and recycling endosomes, and only appears transiently on the plasma membrane.; [Isoform 2]: Recycling endosome membrane ; Multi-pass membrane protein .
<b>Purification</b>	The antibody was affinity-purified from rabbit antiserum by affinity-chromatography using epitope-specific immunogen.

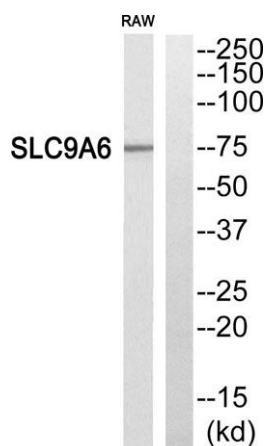
<b>Clonality</b>	Polyclonal
<b>Concentration</b>	1 mg/ml
<b>Observed band</b>	75kD
<b>Human Gene ID</b>	10479
<b>Human Swiss-Prot Number</b>	Q92581
<b>Alternative Names</b>	SLC9A6; KIAA0267; NHE6; Sodium/hydrogen exchanger 6; Na(+)/H(+) exchanger 6; NHE-6; Solute carrier family 9 member 6

**Background**

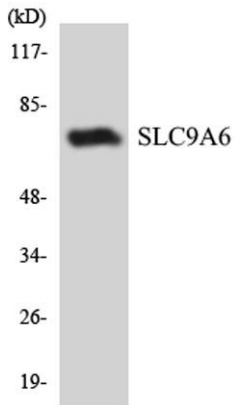
This gene encodes a sodium-hydrogen exchanger that is a member of the solute carrier family 9. The encoded protein localizes to early and recycling endosomes and may be involved in regulating endosomal pH and volume. Defects in this gene are associated with X-linked syndromic mental retardation, Christianson type. Alternate splicing results in multiple transcript variants.[provided by RefSeq, Apr 2010],



**Western Blot analysis of RAW cells using NHE-6 Polyclonal Antibody**



**Western blot analysis of SLC9A6 Antibody. The lane on the right is blocked with the SLC9A6 peptide.**



Western blot analysis of the lysates from COLO205 cells using SLC9A6 antibody.