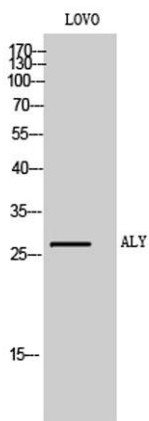


ALY rabbit pAb**Cat#: orb767311 (Manual)**

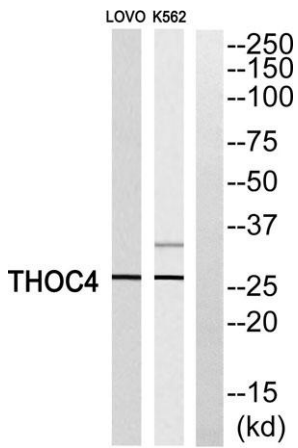
For research use only. Not intended for diagnostic use.

Product Name	ALY rabbit pAb
Host species	Rabbit
Applications	WB;ELISA
Species Cross-Reactivity	Human;Mouse;Rat
Recommended dilutions	Western Blot: 1/500 - 1/2000. ELISA: 1/10000. Not yet tested in other applications.
Immunogen	The antiserum was produced against synthesized peptide derived from human THOC4. AA range:121-170
Specificity	ALY Polyclonal Antibody detects endogenous levels of ALY protein.
Formulation	Liquid in PBS containing 50% glycerol, 0.5% BSA and 0.02% sodium azide..
Storage	Store at -20°C. Avoid repeated freeze-thaw cycles.
Protein Name	THO complex subunit 4
Gene Name	ALYREF
Cellular localization	Nucleus . Nucleus speckle . Cytoplasm . Colocalizes with the core EJC, ALYREF/THOC4, NXF1 and DDX39B in the nucleus and nuclear speckles. Travels to the cytoplasm as part of the exon junction complex (EJC) bound to mRNA (PubMed:19324961). Localizes to regions surrounding nuclear speckles known as perispeckles in which TREX complex assembly seems to occur (PubMed:23826332). .

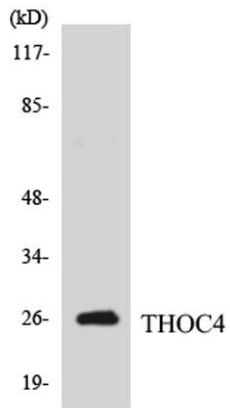
Purification	The antibody was affinity-purified from rabbit antiserum by affinity-chromatography using epitope-specific immunogen.
Clonality	Polyclonal
Concentration	1 mg/ml
Observed band	27kD
Human Gene ID	10189
Human Swiss-Prot Number	Q86V81
Alternative Names	ALYREF; ALY; BEF; THOC4; THO complex subunit 4; Tho4; Ally of AML-1 and LEF-1; Aly/REF export factor; Transcriptional coactivator Aly/REF; bZIP-enhancing factor BEF
Background	The protein encoded by this gene is a heat stable, nuclear protein and functions as a molecular chaperone. It is thought to regulate dimerization, DNA binding, and transcriptional activity of basic region-leucine zipper (bZIP) proteins. [provided by RefSeq, Jul 2008],



Western Blot analysis of LOVO cells using ALY Polyclonal Antibody



Western blot analysis of THOC4 Antibody. The lane on the right is blocked with the THOC4 peptide.



Western blot analysis of the lysates from HepG2 cells using THOC4 antibody.