

TOB1 (phospho Ser164) rabbit pAb**Cat#: orb767302 (Manual)**

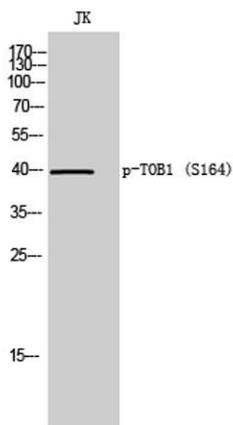
For research use only. Not intended for diagnostic use.

Product Name	TOB1 (phospho Ser164) rabbit pAb
Host species	Rabbit
Applications	WB;IHC;IF;ELISA
Species Cross-Reactivity	Human;Mouse;Rat
Recommended dilutions	Western Blot: 1/500 - 1/2000. Immunohistochemistry: 1/100 - 1/300. ELISA: 1/5000. Not yet tested in other applications.
Immunogen	The antiserum was produced against synthesized peptide derived from human TOB1 around the phosphorylation site of Ser164. AA range:130-179
Specificity	Phospho-TOB1 (S164) Polyclonal Antibody detects endogenous levels of TOB1 protein only when phosphorylated at S164.
Formulation	Liquid in PBS containing 50% glycerol, 0.5% BSA and 0.02% sodium azide..
Storage	Store at -20°C. Avoid repeated freeze-thaw cycles.
Protein Name	Protein Tob1
Gene Name	TOB1
Cellular localization	Cytoplasm . Nucleus . Only a small fraction localizes to the cytoplasm except in late S-phase where more than half of proteins become cytoplasmic. .
Purification	The antibody was affinity-purified from rabbit antiserum by affinity-chromatography using epitope-specific immunogen.
Clonality	Polyclonal

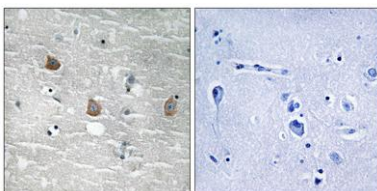
Concentration	1 mg/ml
Observed band	40kD
Human Gene ID	10140
Human Swiss-Prot Number	P50616
Alternative Names	TOB1; TOB; TROB1; Protein Tob1; Transducer of erbB-2 1

Background

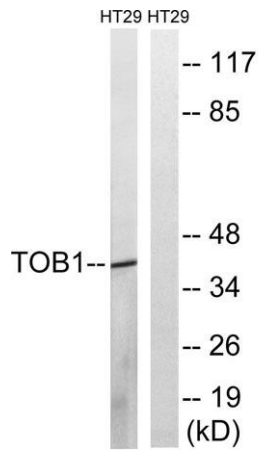
This gene encodes a member of the transducer of erbB-2 /B-cell translocation gene protein family. Members of this family are anti-proliferative factors that have the potential to regulate cell growth. The encoded protein may function as a tumor suppressor. Alternate splicing results in multiple transcript variants. [provided by RefSeq, Aug 2011],



Western Blot analysis of JK cells using Phospho-TOB1 (S164) Polyclonal Antibody



Immunohistochemistry analysis of paraffin-embedded human brain, using TOB1 (Phospho-Ser164) Antibody. The picture on the right is blocked with the phospho peptide.



Western blot analysis of lysates from HT29 cells treated with serum 20% 15', using TOB1 (Phospho-Ser164) Antibody. The lane on the right is blocked with the phospho peptide.