

HDAC6 (phospho Ser22) rabbit pAb**Cat#: orb767279 (Manual)**

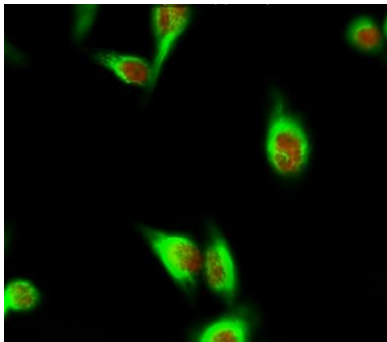
For research use only. Not intended for diagnostic use.

Product Name	HDAC6 (phospho Ser22) rabbit pAb
Host species	Rabbit
Applications	WB;IHC;IF;ELISA
Species Cross-Reactivity	Human;Mouse
Recommended dilutions	Western Blot: 1/500 - 1/2000. Immunohistochemistry: 1/100 - 1/300. Immunofluorescence: 1/200 - 1/1000. ELISA: 1/10000. Not yet tested in other applications.
Immunogen	The antiserum was produced against synthesized peptide derived from human HDAC6 around the phosphorylation site of Ser22. AA range:7-56
Specificity	Phospho-HDAC6 (S22) Polyclonal Antibody detects endogenous levels of HDAC6 protein only when phosphorylated at S22.
Formulation	Liquid in PBS containing 50% glycerol, 0.5% BSA and 0.02% sodium azide..
Storage	Store at -20°C. Avoid repeated freeze-thaw cycles.
Protein Name	Histone deacetylase 6
Gene Name	HDAC6
Cellular localization	Cytoplasm . Cytoplasm, cytoskeleton . Nucleus . Perikaryon . Cell projection, dendrite . Cell projection, axon . It is mainly cytoplasmic, where it is associated with microtubules. .
Purification	The antibody was affinity-purified from rabbit antiserum by affinity-chromatography using epitope-specific immunogen.

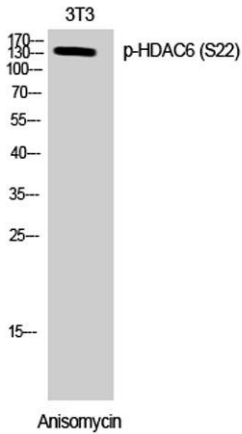
Clonality	Polyclonal
Concentration	1 mg/ml
Observed band	131kD
Human Gene ID	10013
Human Swiss-Prot Number	Q9UBN7
Alternative Names	HDAC6; KIAA0901; JM21; Histone deacetylase 6; HD6

Background

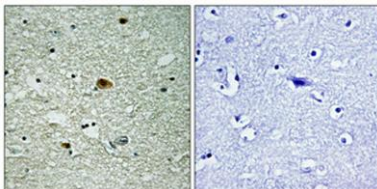
Histones play a critical role in transcriptional regulation, cell cycle progression, and developmental events. Histone acetylation/deacetylation alters chromosome structure and affects transcription factor access to DNA. The protein encoded by this gene belongs to class II of the histone deacetylase/acuc/apha family. It contains an internal duplication of two catalytic domains which appear to function independently of each other. This protein possesses histone deacetylase activity and represses transcription. [provided by RefSeq, Jul 2008],



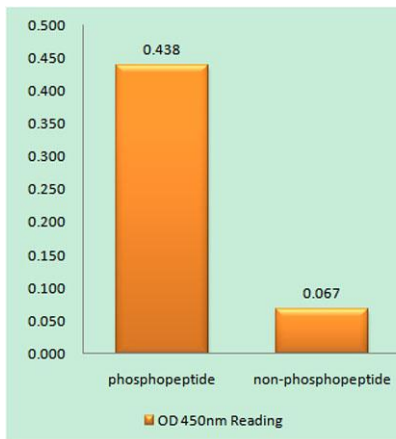
Immunofluorescence analysis of HeLa cell. 1,HDAC6 (phospho Ser22) Polyclonal Antibody(red) was diluted at 1:200(4° overnight). Galectin-3 Monoclonal Antibody(6G2)(green) was diluted at 1:200(4° overnight). 2, Goat Anti Rabbit Alexa Fluor 594 Catalog:RS3611 was diluted at 1:1000(room temperature, 50min). Goat Anti Mouse Alexa Fluor 488 Catalog:RS3208 was diluted at 1:1000(room temperature, 50min).



Western Blot analysis of 3T3 cells using Phospho-HDAC6 (S22) Polyclonal Antibody diluted at 1:500



Immunohistochemical analysis of paraffin-embedded Human brain. Antibody was diluted at 1:100(4° overnight). High-pressure and temperature Tris-EDTA,pH8.0 was used for antigen retrieval. Negative contrl (right) obtained from antibody was pre-absorbed by immunogen peptide.



Enzyme-Linked Immunosorbent Assay (Phospho-ELISA) for Immunogen Phosphopeptide (Phospho-left) and Non-Phosphopeptide (Phospho-right), using HDAC6 (Phospho-Ser22) Antibody