

Ras-GRF1 (phospho Ser916) rabbit pAb**Cat#: orb767268 (Manual)**

For research use only. Not intended for diagnostic use.

Product Name	Ras-GRF1 (phospho Ser916) rabbit pAb
Host species	Rabbit
Applications	WB;IHC;IF;ELISA
Species Cross-Reactivity	Mouse;Rat
Recommended dilutions	Immunohistochemistry: 1/100 - 1/300. Immunofluorescence: 1/200 - 1/1000. ELISA: 1/20000. Not yet tested in other applications.
Immunogen	The antiserum was produced against synthesized peptide derived from mouse Ras-GRF1 around the phosphorylation site of Ser916. AA range:882-931
Specificity	Phospho-Ras-GRF1 (S916) Polyclonal Antibody detects endogenous levels of Ras-GRF1 protein only when phosphorylated at S916.
Formulation	Liquid in PBS containing 50% glycerol, 0.5% BSA and 0.02% sodium azide..
Storage	Store at -20°C. Avoid repeated freeze-thaw cycles.
Protein Name	Ras-specific guanine nucleotide-releasing factor 1
Gene Name	RASGRF1
Cellular localization	
Purification	The antibody was affinity-purified from rabbit antiserum by affinity-chromatography using epitope-specific immunogen.
Clonality	Polyclonal

Concentration 1 mg/ml

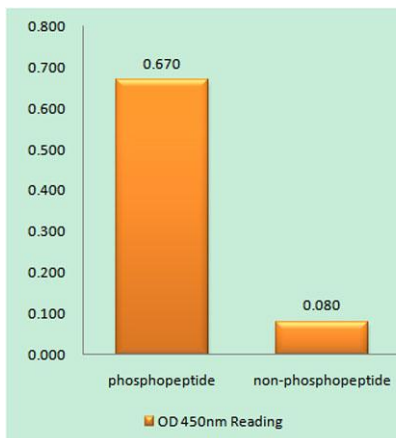
Observed band

Human Gene ID

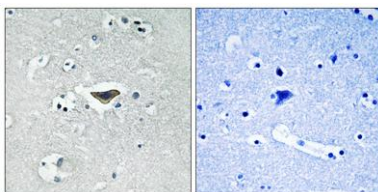
Human Swiss-Prot Number

Alternative Names RASGRF1; CDC25; GNRP; GRF1; Ras-specific guanine nucleotide-releasing factor 1; Ras-GRF1; Guanine nucleotide-releasing protein; GNRP; Ras-specific exchange factor CDC25

Background RASGRF1 (Ras Protein Specific Guanine Nucleotide Releasing Factor 1) is a Protein Coding gene. Diseases associated with RASGRF1 include bleeding disorder, platelet-type, 18 and refractive error. Among its related pathways are Signaling by GPCR and Immune System. GO annotations related to this gene include guanyl-nucleotide exchange factor activity and Ras guanyl-nucleotide exchange factor activity. An important paralog of this gene is RALGDS. promotes the exchange of Ras-bound GDP by GTP.



Enzyme-Linked Immunosorbent Assay (Phospho-ELISA) for Immunogen Phosphopeptide (Phospho-left) and Non-Phosphopeptide (Phospho-right), using Ras-GRF1 (Phospho-Ser916) Antibody



Immunohistochemistry analysis of paraffin-embedded human brain, using Ras-GRF1 (Phospho-Ser916) Antibody. The picture on the right is blocked with the phospho peptide.



Explore. Bioreagents.

www.biorbyt.com