

MIP-1b rabbit pAb**Cat#: orb767252 (Manual)**

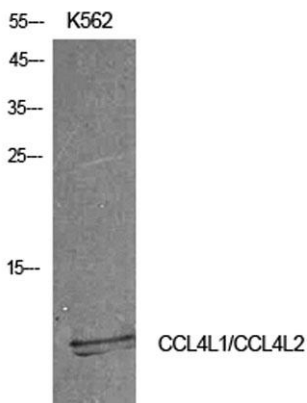
For research use only. Not intended for diagnostic use.

Product Name	MIP-1b rabbit pAb
Host species	Rabbit
Applications	WB;IHC
Species Cross-Reactivity	Human;Rat;Mouse;
Recommended dilutions	WB 1:500-2000;IHC-p 1:50-300
Immunogen	The antiserum was produced against synthesized peptide derived from the Internal region of human CCL4L1/CCL4L2. AA range:31-80
Specificity	MIP-1b Polyclonal Antibody detects endogenous levels of MIP-1b protein.
Formulation	Liquid in PBS containing 50% glycerol, 0.5% BSA and 0.02% sodium azide..
Storage	Store at -20°C. Avoid repeated freeze-thaw cycles.
Protein Name	C-C motif chemokine 4-like
Gene Name	CCL4L1/CCL4L2
Cellular localization	Secreted .
Purification	The antibody was affinity-purified from rabbit antiserum by affinity-chromatography using epitope-specific immunogen.
Clonality	Polyclonal

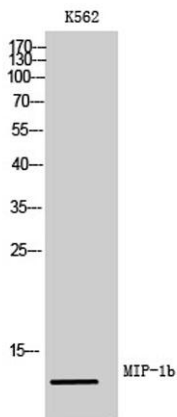
Concentration	1 mg/ml
Observed band	11kD
Human Gene ID	388372/9560
Human Swiss-Prot Number	Q8NHW4
Alternative Names	CCL4L1; CCL4L; LAG1; SCYA4L1; CCL4L2; CCL4L; SCYA4L2; C-C motif chemokine 4-like; Lymphocyte activation gene 1 protein; LAG-1; Macrophage inflammatory protein 1-beta; MIP-1-beta; Monocyte adherence-induced protein 5-alpha; Small-inducible cytokine A4-like

Background

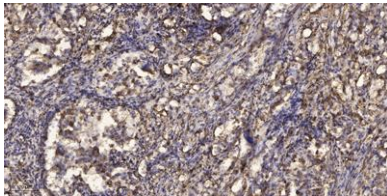
This gene is one of several cytokine genes that are clustered on the q-arm of chromosome 17. Cytokines are a family of secreted proteins that function in inflammatory and immunoregulatory processes. The protein encoded by this family member is similar to the chemokine (C-C motif) ligand 4 product, which inhibits HIV entry by binding to the cellular receptor CCR5. The copy number of this gene varies among individuals, where most individuals have one to five copies. This gene copy contains a non-consensus splice acceptor site at the 3' terminal exon found in other highly similar gene copies, and it thus uses other alternative splice sites for the 3' terminal exon, resulting in multiple transcript variants. [provided by RefSeq, Apr 2014],



Western Blot analysis of K562 cells using MIP-1b Polyclonal Antibody. Antibody was diluted at 1:500. Secondary antibody(catalog#:RS0002) was diluted at 1:20000



Western Blot analysis of K562 cells using MIP-1b Polyclonal Antibody diluted at 1:500. Secondary antibody(catalog#:RS0002) was diluted at 1:20000



Immunohistochemical analysis of paraffin-embedded human Squamous cell carcinoma of lung. 1, Antibody was diluted at 1:200(4° overnight). 2, Tris-EDTA,pH9.0 was used for antigen retrieval. 3,Secondary antibody was diluted at 1:200(room temperature, 45min).