

CD267 rabbit pAb**Cat#: orb767237 (Manual)**

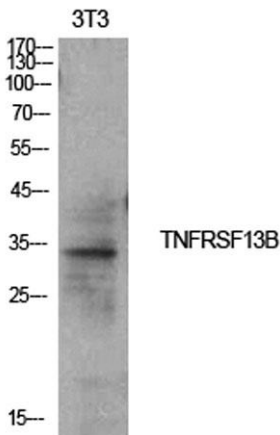
For research use only. Not intended for diagnostic use.

Product Name	CD267 rabbit pAb
Host species	Rabbit
Applications	WB;ELISA
Species Cross-Reactivity	Human;Rat;Mouse;
Recommended dilutions	Western Blot: 1/500 - 1/2000. ELISA: 1/10000. Not yet tested in other applications.
Immunogen	The antiserum was produced against synthesized peptide derived from the Internal region of human TNFRSF13B. AA range:81-130
Specificity	CD267 Polyclonal Antibody detects endogenous levels of CD267 protein.
Formulation	Liquid in PBS containing 50% glycerol, 0.5% BSA and 0.02% sodium azide..
Storage	Store at -20°C. Avoid repeated freeze-thaw cycles.
Protein Name	Tumor necrosis factor receptor superfamily member 13B
Gene Name	TNFRSF13B
Cellular localization	Membrane; Single-pass type III membrane protein.
Purification	The antibody was affinity-purified from rabbit antiserum by affinity-chromatography using epitope-specific immunogen.
Clonality	Polyclonal

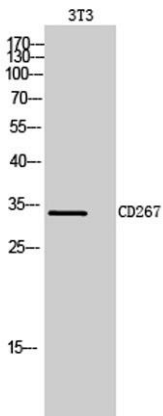
Concentration	1 mg/ml
Observed band	32kD
Human Gene ID	23495
Human Swiss-Prot Number	O14836
Alternative Names	TNFRSF13B; TACI; Tumor necrosis factor receptor superfamily member 13B; Transmembrane activator and CAML interactor; CD267

Background

The protein encoded by this gene is a lymphocyte-specific member of the tumor necrosis factor (TNF) receptor superfamily. It interacts with calcium-modulator and cyclophilin ligand (CAML). The protein induces activation of the transcription factors NFAT, AP1, and NF-kappa-B and plays a crucial role in humoral immunity by interacting with a TNF ligand. This gene is located within the Smith-Magenis syndrome region on chromosome 17. [provided by RefSeq, Jul 2008],



Western Blot analysis of NIH-3T3 cells using CD267 Polyclonal Antibody. Secondary antibody(catalog#:RS0002) was diluted at 1:20000



Western Blot analysis of 3T3 cells using CD267 Polyclonal Antibody. Secondary antibody(catalog#:RS0002) was diluted at 1:20000



Explore. Bioreagents.

www.biorbyt.com