

**IL-13R $\alpha$ 2 rabbit pAb****Cat#: orb767221 (Manual)**

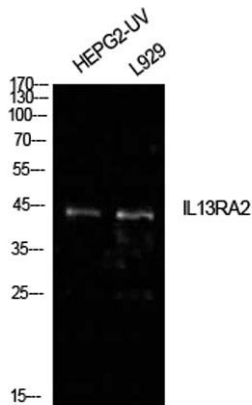
For research use only. Not intended for diagnostic use.

<b>Product Name</b>	IL-13R $\alpha$ 2 rabbit pAb
<b>Host species</b>	Rabbit
<b>Applications</b>	WB;IHC;IF;ELISA
<b>Species Cross-Reactivity</b>	Human;Rat;Mouse;
<b>Recommended dilutions</b>	Western Blot: 1/500 - 1/2000. IHC-p: 1:100-1:300. ELISA: 1/10000. Not yet tested in other applications.
<b>Immunogen</b>	Synthesized peptide derived from Interleukin-13 receptor subunit alpha-2 at AA range: 241-290
<b>Specificity</b>	IL-13R $\alpha$ 2 Polyclonal Antibody detects endogenous levels of IL-13R $\alpha$ 2 protein.
<b>Formulation</b>	Liquid in PBS containing 50% glycerol, 0.5% BSA and 0.02% sodium azide..
<b>Storage</b>	Store at -20°C. Avoid repeated freeze-thaw cycles.
<b>Protein Name</b>	Interleukin-13 receptor subunit alpha-2
<b>Gene Name</b>	IL13RA2
<b>Cellular localization</b>	Membrane; Single-pass type I membrane protein.
<b>Purification</b>	The antibody was affinity-purified from rabbit antiserum by affinity-chromatography using epitope-specific immunogen.
<b>Clonality</b>	Polyclonal

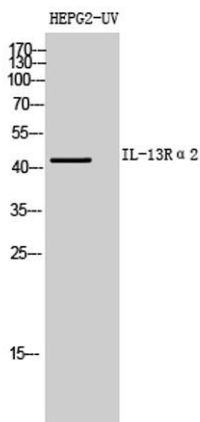
Explore. Bioreagents.

<b>Concentration</b>	1 mg/ml
<b>Observed band</b>	44kD
<b>Human Gene ID</b>	3598
<b>Human Swiss-Prot Number</b>	Q14627
<b>Alternative Names</b>	IL13RA2; IL13R; Interleukin-13 receptor subunit alpha-2; IL-13 receptor subunit alpha-2; IL-13R subunit alpha-2; IL-13R-alpha-2; IL-13RA2; Interleukin-13-binding protein; CD213a2

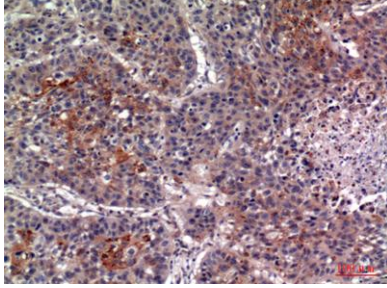
**Background** The protein encoded by this gene is closely related to IL13RA1, a subunit of the interleukin 13 receptor complex. This protein binds IL13 with high affinity, but lacks cytoplasmic domain, and does not appear to function as a signal mediator. It is reported to play a role in the internalization of IL13. [provided by RefSeq, Jul 2008],



**Western Blot analysis of HepG2(UV), L929 cells using IL-13R $\alpha$ 2 Polyclonal Antibody. Antibody was diluted at 1:500. Secondary antibody(catalog#:RS0002) was diluted at 1:20000**



**Western Blot analysis of HEPG2-UV cells using IL-13R $\alpha$ 2 Polyclonal Antibody diluted at 1:500. Secondary antibody(catalog#:RS0002) was diluted at 1:20000**



**Immunohistochemical analysis of paraffin-embedded human-lung, antibody was diluted at 1:100**