

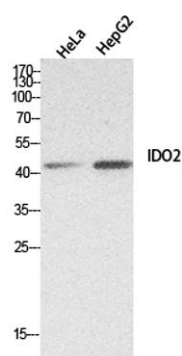
**INDOL1 rabbit pAb****Cat#: orb767120 (Manual)**

For research use only. Not intended for diagnostic use.

<b>Product Name</b>	INDOL1 rabbit pAb
<b>Host species</b>	Rabbit
<b>Applications</b>	WB;ELISA
<b>Species Cross-Reactivity</b>	Human;Rat;Mouse;
<b>Recommended dilutions</b>	Western Blot: 1/500 - 1/2000. ELISA: 1/20000. Not yet tested in other applications.
<b>Immunogen</b>	The antiserum was produced against synthesized peptide derived from the Internal region of human IDO2. AA range:101-150
<b>Specificity</b>	INDOL1 Polyclonal Antibody detects endogenous levels of INDOL1 protein.
<b>Formulation</b>	Liquid in PBS containing 50% glycerol, 0.5% BSA and 0.02% sodium azide..
<b>Storage</b>	Store at -20°C. Avoid repeated freeze-thaw cycles.
<b>Protein Name</b>	Indoleamine 2,3-dioxygenase 2
<b>Gene Name</b>	IDO2
<b>Cellular localization</b>	cytoplasm,cytosol,integral component of membrane,
<b>Purification</b>	The antibody was affinity-purified from rabbit antiserum by affinity-chromatography using epitope-specific immunogen.
<b>Clonality</b>	Polyclonal

<b>Concentration</b>	1 mg/ml
<b>Observed band</b>	45kD
<b>Human Gene ID</b>	169355
<b>Human Swiss-Prot Number</b>	Q6ZQW0
<b>Alternative Names</b>	IDO2; INDOL1; Indoleamine 2,3-dioxygenase 2; IDO-2; Indoleamine 2,3-dioxygenase-like protein 1; Indoleamine-pyrrole 2,3-dioxygenase-like protein 1

**Background** Along with the enzymes encoded by the INDO (MIM 147435) and TDO2 (MIM 191070) genes, the enzyme encoded by the INDOL1 gene metabolizes tryptophan in the kynurenine pathway (Ball et al., 2007 [PubMed 17499941]).[supplied by OMIM, Feb 2011],



**Western Blot analysis of HeLa, HepG2 cells using INDOL1 Polyclonal Antibody. Secondary antibody(catalog#:RS0002) was diluted at 1:20000**