

GMF- β rabbit pAb**Cat#: orb767118 (Manual)**

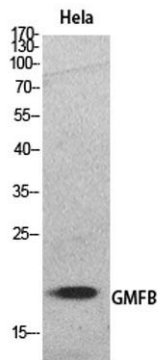
For research use only. Not intended for diagnostic use.

| | |
|---------------------------------|---|
| Product Name | GMF- β rabbit pAb |
| Host species | Rabbit |
| Applications | WB;IHC;IF;ELISA |
| Species Cross-Reactivity | Human;Mouse;Rat |
| Recommended dilutions | Western Blot: 1/500 - 1/2000. IHC-p: 1/100-1/300. ELISA: 1/20000. Not yet tested in other applications. |
| Immunogen | The antiserum was produced against synthesized peptide derived from the Internal region of human GMFB. AA range: 1-50 |
| Specificity | GMF- β Polyclonal Antibody detects endogenous levels of GMF- β protein. |
| Formulation | Liquid in PBS containing 50% glycerol, 0.5% BSA and 0.02% sodium azide.. |
| Storage | Store at -20°C. Avoid repeated freeze-thaw cycles. |
| Protein Name | Glia maturation factor beta |
| Gene Name | GMFB |
| Cellular localization | intracellular, |
| Purification | The antibody was affinity-purified from rabbit antiserum by affinity-chromatography using epitope-specific immunogen. |
| Clonality | Polyclonal |

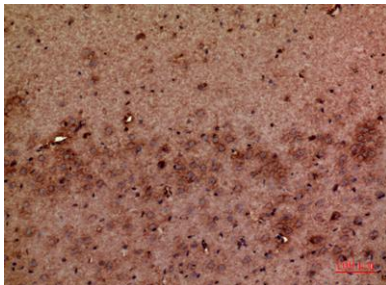
| | |
|--------------------------------|---|
| Concentration | 1 mg/ml |
| Observed band | 17kD |
| Human Gene ID | 2764 |
| Human Swiss-Prot Number | P60983 |
| Alternative Names | GMFB; Glia maturation factor beta; GMF-beta |

Background

function: This protein causes differentiation of brain cells, stimulation of neural regeneration, and inhibition of proliferation of tumor cells.,PTM: Phosphorylated; stimulated by phorbol ester.,similarity: Belongs to the actin-binding proteins ADF family. GMF subfamily.,similarity: Contains 1 ADF-H domain.,



Western Blot analysis of HeLa cells using GMF- β Polyclonal Antibody. Secondary antibody(catalog#:RS0002) was diluted at 1:20000



Immunohistochemical analysis of paraffin-embedded mouse-brain, antibody was diluted at 1:100