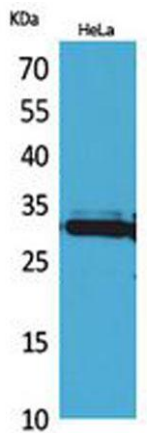


IL-33 rabbit pAb**Cat#: orb767092 (Manual)**

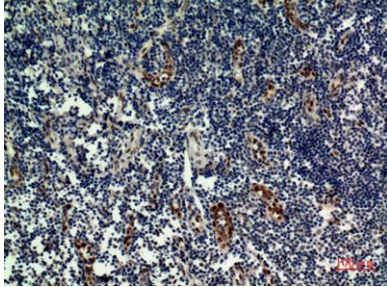
For research use only. Not intended for diagnostic use.

Product Name	IL-33 rabbit pAb
Host species	Rabbit
Applications	WB;IHC;IF;ELISA
Species Cross-Reactivity	Human;Rat;Mouse;
Recommended dilutions	Western Blot: 1/500 - 1/2000. IHC-p: 1/100-1/300. ELISA: 1/20000. Not yet tested in other applications.
Immunogen	The antiserum was produced against synthesized peptide derived from the Internal region of human IL33. AA range:121-170
Specificity	IL-33 Polyclonal Antibody detects endogenous levels of IL-33 protein.
Formulation	Liquid in PBS containing 50% glycerol, 0.5% BSA and 0.02% sodium azide..
Storage	Store at -20°C. Avoid repeated freeze-thaw cycles.
Protein Name	Interleukin-33
Gene Name	IL33
Cellular localization	Nucleus . Chromosome . Cytoplasm . Cytoplasmic vesicle, secretory vesicle . Secreted . Associates with heterochromatin and mitotic chromosomes (PubMed:17185418). The secretion is dependent on protein unfolding and facilitated by the cargo receptor TMED10; it results in protein translocation from the cytoplasm into the ERGIC (endoplasmic reticulum-Golgi intermediate compartment) followed by vesicle entry and secretion (PubMed:32272059)..

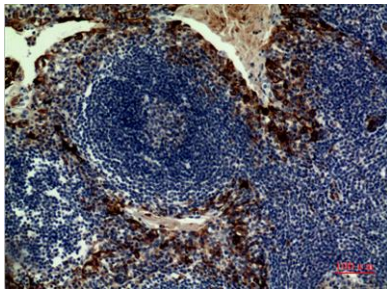
Purification	The antibody was affinity-purified from rabbit antiserum by affinity-chromatography using epitope-specific immunogen.
Clonality	Polyclonal
Concentration	1 mg/ml
Observed band	31kD
Human Gene ID	90865
Human Swiss-Prot Number	O95760
Alternative Names	IL33; C9orf26; IL1F11; NFHEV; Interleukin-33; IL-33; Interleukin-1 family member 11; IL-1F11; Nuclear factor from high endothelial venules; NF-HEV
Background	The protein encoded by this gene is a cytokine that binds to the IL1RL1/ST2 receptor. The encoded protein is involved in the maturation of Th2 cells and the activation of mast cells, basophils, eosinophils and natural killer cells. Several transcript variants encoding different isoforms have been found for this gene. [provided by RefSeq, Sep 2015],



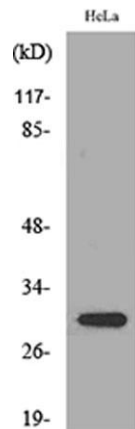
Western Blot analysis of HeLa cells using IL-33 Polyclonal Antibody. Secondary antibody(catalog#:RS0002) was diluted at 1:20000



Immunohistochemical analysis of paraffin-embedded human-tonsilla, antibody was diluted at 1:100



Immunohistochemical analysis of paraffin-embedded human-tonsilla, antibody was diluted at 1:100



Western blot analysis of lysate from HeLa cells, using IL33 Antibody.