

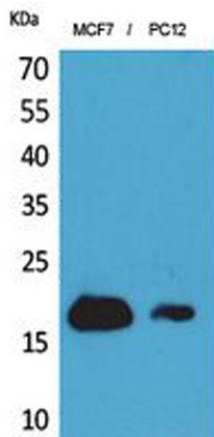
CD225 rabbit pAb**Cat#: orb767083 (Manual)**

For research use only. Not intended for diagnostic use.

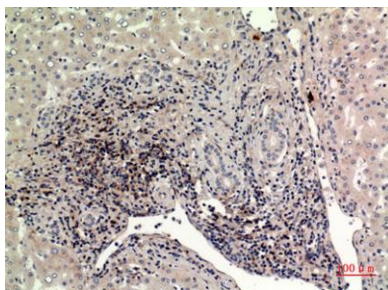
Product Name	CD225 rabbit pAb
Host species	Rabbit
Applications	WB;IHC;IF;ELISA
Species Cross-Reactivity	Human;Rat;Mouse;
Recommended dilutions	Western Blot: 1/500 - 1/2000. IHC-p: 1/100-1/300. ELISA: 1/20000. Not yet tested in other applications.
Immunogen	The antiserum was produced against synthesized peptide derived from the N-terminal region of human IFITM1. AA range:1-50
Specificity	CD225 Polyclonal Antibody detects endogenous levels of CD225 protein.
Formulation	Liquid in PBS containing 50% glycerol, 0.5% BSA and 0.02% sodium azide..
Storage	Store at -20°C. Avoid repeated freeze-thaw cycles.
Protein Name	Interferon-induced transmembrane protein 1
Gene Name	IFITM1
Cellular localization	Cell membrane ; Single-pass membrane protein . Lysosome membrane .
Purification	The antibody was affinity-purified from rabbit antiserum by affinity-chromatography using epitope-specific immunogen.
Clonality	Polyclonal

Concentration	1 mg/ml
Observed band	15kD
Human Gene ID	8519
Human Swiss-Prot Number	P13164
Alternative Names	IFITM1; CD225; IFI17; Interferon-induced transmembrane protein 1; Dispanin subfamily A member 2a; DSPA2a; Interferon-induced protein 17; Interferon-inducible protein 9-27; Leu-13 antigen; CD225

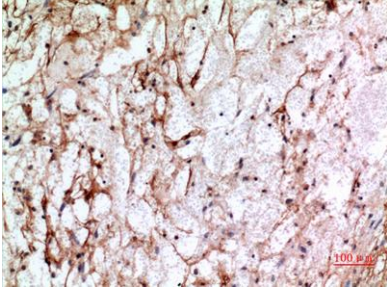
Background function: Implicated in the control of cell growth. Component of a multimeric complex involved in the transduction of antiproliferative and homotypic adhesion signals., induction: By alpha and gamma interferons., similarity: Belongs to the CD225 family.,



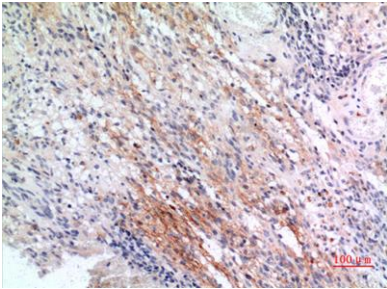
Western Blot analysis of MCF7, PC12 cells using CD225 Polyclonal Antibody. Secondary antibody(catalog#:RS0002) was diluted at 1:20000



Immunohistochemical analysis of paraffin-embedded human-liver, antibody was diluted at 1:100



Immunohistochemical analysis of paraffin-embedded human-brain, antibody was diluted at 1:100



Immunohistochemical analysis of paraffin-embedded human-brain, antibody was diluted at 1:100