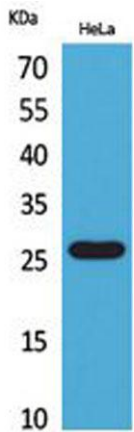


DCL-1 rabbit pAb**Cat#: orb767078 (Manual)**

For research use only. Not intended for diagnostic use.

Product Name	DCL-1 rabbit pAb
Host species	Rabbit
Applications	WB;ELISA
Species Cross-Reactivity	Human;Rat;Mouse;
Recommended dilutions	Western Blot: 1/500 - 1/2000. ELISA: 1/20000. Not yet tested in other applications.
Immunogen	The antiserum was produced against synthesized peptide derived from the Internal region of human CD302. AA range:81-130
Specificity	DCL-1 Polyclonal Antibody detects endogenous levels of DCL-1 protein.
Formulation	Liquid in PBS containing 50% glycerol, 0.5% BSA and 0.02% sodium azide..
Storage	Store at -20°C. Avoid repeated freeze-thaw cycles.
Protein Name	CD302 antigen
Gene Name	CD302
Cellular localization	Membrane ; Single-pass type I membrane protein . Cell projection, filopodium . Cytoplasm, cell cortex . Cell projection, microvillus . Colocalizes with F-actin in filopodia, cellular cortex and microvilli of the apical cell surface.
Purification	The antibody was affinity-purified from rabbit antiserum by affinity-chromatography using epitope-specific immunogen.

Clonality	Polyclonal
Concentration	1 mg/ml
Observed band	26kD
Human Gene ID	9936
Human Swiss-Prot Number	Q8IX05
Alternative Names	CD302; CLEC13A; DCL1; KIAA0022; CD302 antigen; C-type lectin BIMLEC; C-type lectin domain family 13 member A; DEC205-associated C-type lectin I; Type I transmembrane C-type lectin receptor DCL-1; CD302
Background	CD302 is a C-type lectin receptor involved in cell adhesion and migration, as well as endocytosis and phagocytosis (Kato et al., 2007 [PubMed 17947679]).[supplied by OMIM, Aug 2008].



Western Blot analysis of HeLa cells using DCL-1 Polyclonal Antibody. Secondary antibody(catalog#:RS0002) was diluted at 1:20000