

**MYH-pan rabbit pAb****Cat#: orb767032 (Manual)**

For research use only. Not intended for diagnostic use.

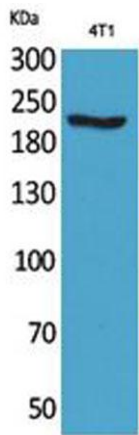
<b>Product Name</b>	MYH-pan rabbit pAb
<b>Host species</b>	Rabbit
<b>Applications</b>	WB;IHC;IF;ELISA
<b>Species Cross-Reactivity</b>	Human;Mouse;Rat
<b>Recommended dilutions</b>	Western Blot: 1/500 - 1/2000. IHC-p: 1/100-1/300. ELISA: 1/20000. Not yet tested in other applications.
<b>Immunogen</b>	The antiserum was produced against synthesized peptide derived from human MYH-pan around the non-acetylation site of Lys1394. AA range:1351-1400
<b>Specificity</b>	MYH-pan Polyclonal Antibody detects endogenous levels of MYH-pan protein only when acetylation at K1394.
<b>Formulation</b>	Liquid in PBS containing 50% glycerol, 0.5% BSA and 0.02% sodium azide..
<b>Storage</b>	Store at -20°C. Avoid repeated freeze-thaw cycles.
<b>Protein Name</b>	Myosin-1/Myosin-2/Myosin-3/Receptor-type tyrosine-protein phosphatase eta/Myosin-6/Myosin-7/Myosin-8
<b>Gene Name</b>	MYH1/MYH2/MYH3/PTPRJ/MYH6/MYH7/MYH8
<b>Cellular localization</b>	Cytoplasm, myofibril. Thick filaments of the myofibrils.
<b>Purification</b>	The antibody was affinity-purified from rabbit antiserum by affinity-chromatography using epitope-specific immunogen.
<b>Clonality</b>	Polyclonal

Explore. Bioreagents.

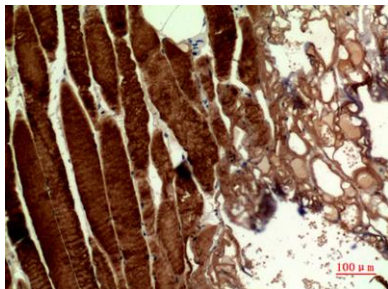
<b>Concentration</b>	1 mg/ml
<b>Observed band</b>	225kD
<b>Human Gene ID</b>	4619/4620/4621/5795/4624/4625/4626
<b>Human Swiss-Prot Number</b>	P12882/Q9UKX2/P11055/Q9Y623/P13533/P12883/P13535
<b>Alternative Names</b>	MYH1; Myosin-1; Myosin heavy chain 1; Myosin heavy chain 2x; MyHC-2x; Myosin heavy chain IIX/d; MyHC-IIX/d; Myosin heavy chain, skeletal muscle, adult 1; MYH2; MYHSA2; Myosin-2; Myosin heavy chain 2Myosin heavy chain 2; Myosin heavy chain 2a; MyHC-2a; Myo

**Background**

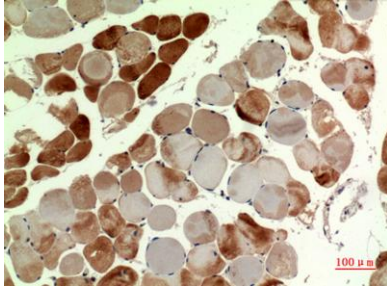
Myosin is a major contractile protein which converts chemical energy into mechanical energy through the hydrolysis of ATP. Myosin is a hexameric protein composed of a pair of myosin heavy chains (MYH) and two pairs of nonidentical light chains. Myosin heavy chains are encoded by a multigene family. In mammals at least 10 different myosin heavy chain (MYH) isoforms have been described from striated, smooth, and nonmuscle cells. These isoforms show expression that is spatially and temporally regulated during development. [provided by RefSeq, Jul 2008],



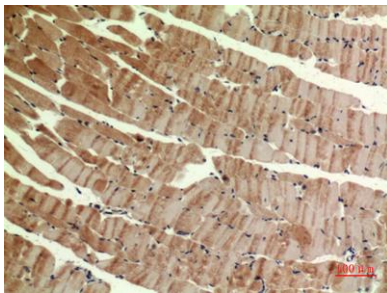
**Western Blot analysis of 4T1 cells using MYH-pan Polyclonal Antibody. Secondary antibody(catalog#:RS0002) was diluted at 1:20000**



**Immunohistochemical analysis of paraffin-embedded human-muscle, antibody was diluted at 1:100**



**Immunohistochemical analysis of paraffin-embedded human-muscle, antibody was diluted at 1:100**



**Immunohistochemical analysis of paraffin-embedded mouse-muscle, antibody was diluted at 1:100**