

**Nov rabbit pAb****Cat#: orb767017 (Manual)**

For research use only. Not intended for diagnostic use.

<b>Product Name</b>	Nov rabbit pAb
<b>Host species</b>	Rabbit
<b>Applications</b>	WB;IHC;IF;ELISA
<b>Species Cross-Reactivity</b>	Human;Mouse
<b>Recommended dilutions</b>	Western Blot: 1/500 - 1/2000. IHC-p: 1/100-1/300. ELISA: 1/20000. Not yet tested in other applications.
<b>Immunogen</b>	The antiserum was produced against synthesized peptide derived from the Internal region of human NOV. AA range:221-270
<b>Specificity</b>	Nov Polyclonal Antibody detects endogenous levels of Nov protein.
<b>Formulation</b>	Liquid in PBS containing 50% glycerol, 0.5% BSA and 0.02% sodium azide..
<b>Storage</b>	Store at -20°C. Avoid repeated freeze-thaw cycles.
<b>Protein Name</b>	Protein NOV homolog
<b>Gene Name</b>	NOV
<b>Cellular localization</b>	Secreted. Cytoplasm . Cell junction, gap junction . Localizes at the gap junction in presence of GJA1. .
<b>Purification</b>	The antibody was affinity-purified from rabbit antiserum by affinity-chromatography using epitope-specific immunogen.
<b>Clonality</b>	Polyclonal

**Concentration** 1 mg/ml

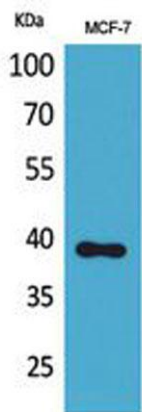
**Observed band** 39kD

**Human Gene ID** 4856

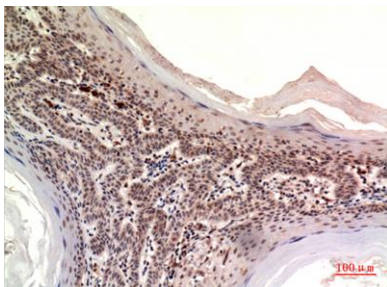
**Human Swiss-Prot Number** P48745

**Alternative Names** NOV; CCN3; IGFBP9; NOVH; Protein NOV homolog; NovH; CCN family member 3; Insulin-like growth factor-binding protein 9; IBP-9; IGF-binding protein 9; IGFBP-9; Nephroblastoma-overexpressed gene protein homolog

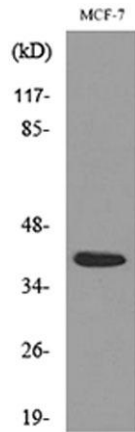
**Background** The protein encoded by this gene is a small secreted cysteine-rich protein and a member of the CCN family of regulatory proteins. CCN family proteins associate with the extracellular matrix and play an important role in cardiovascular and skeletal development, fibrosis and cancer development. [provided by RefSeq, Feb 2009],



**Western Blot analysis of MCF-7 cells using Nov Polyclonal Antibody. Secondary antibody(catalog#:RS0002) was diluted at 1:20000**



**Immunohistochemical analysis of paraffin-embedded human-skin, antibody was diluted at 1:100**



Western blot analysis of lysate from MCF-7 cells, using NOV Antibody.