

**Inhibin  $\beta$ -B rabbit pAb****Cat#: orb767013 (Manual)**

For research use only. Not intended for diagnostic use.

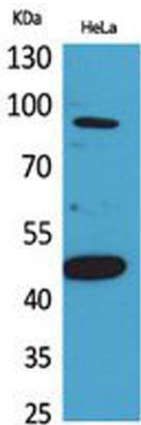
<b>Product Name</b>	Inhibin $\beta$ -B rabbit pAb
<b>Host species</b>	Rabbit
<b>Applications</b>	WB;IHC;IF;ELISA
<b>Species Cross-Reactivity</b>	Human;Mouse;Rat
<b>Recommended dilutions</b>	Western Blot: 1/500 - 1/2000. IHC-p: 1/100-1/300. ELISA: 1/20000. Not yet tested in other applications.
<b>Immunogen</b>	Synthesized peptide derived from Inhibin beta B chain at AA range: 351-400
<b>Specificity</b>	Inhibin $\beta$ -B Polyclonal Antibody detects endogenous levels of Inhibin $\beta$ -B protein.
<b>Formulation</b>	Liquid in PBS containing 50% glycerol, 0.5% BSA and 0.02% sodium azide..
<b>Storage</b>	Store at -20°C. Avoid repeated freeze-thaw cycles.
<b>Protein Name</b>	Inhibin beta B chain
<b>Gene Name</b>	INHBB
<b>Cellular localization</b>	Secreted.
<b>Purification</b>	The antibody was affinity-purified from rabbit antiserum by affinity-chromatography using epitope-specific immunogen.
<b>Clonality</b>	Polyclonal

Explore. Bioreagents.

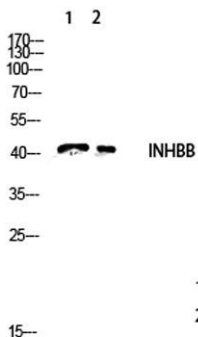
<b>Concentration</b>	1 mg/ml
<b>Observed band</b>	45kD
<b>Human Gene ID</b>	3625
<b>Human Swiss-Prot Number</b>	P09529
<b>Alternative Names</b>	INHBB; Inhibin beta B chain; Activin beta-B chain

**Background**

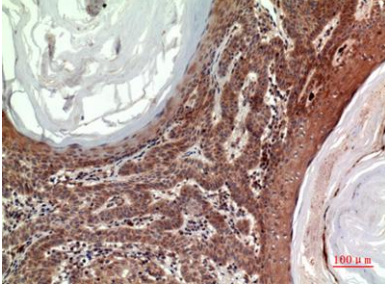
This gene encodes a member of the TGF-beta (transforming growth factor-beta) superfamily of proteins. The encoded preproprotein is proteolytically processed to generate a subunit of the dimeric activin and inhibin protein complexes. These complexes activate and inhibit, respectively, follicle stimulating hormone secretion from the pituitary gland. Polymorphisms near this gene are associated with pre-eclampsia in female human patients. [provided by RefSeq, Aug 2016],



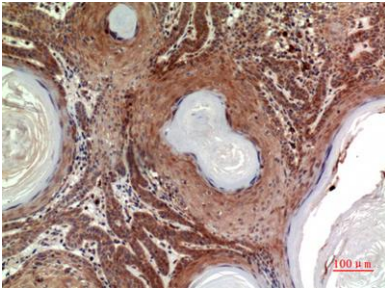
**Western Blot analysis of HeLa cells using Inhibin  $\beta$ -B Polyclonal Antibody. Antibody was diluted at 1:2000. Secondary antibody(catalog#:RS0002) was diluted at 1:20000**



**Western blot analysis of YT5408wb4147442094 lysis using INHBB Antibody antibody. Antibody was diluted at 1:2000. Secondary antibody(catalog#:RS0002) was diluted at 1:20000**



**Immunohistochemical analysis of paraffin-embedded human-skin, antibody was diluted at 1:100**



**Immunohistochemical analysis of paraffin-embedded human-skin, antibody was diluted at 1:100**