

CD294 rabbit pAb**Cat#: orb767010 (Manual)**

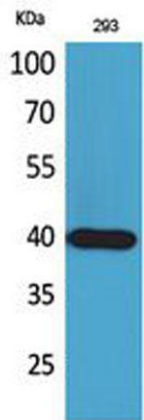
For research use only. Not intended for diagnostic use.

Product Name	CD294 rabbit pAb
Host species	Rabbit
Applications	WB;IHC;IF;ELISA
Species Cross-Reactivity	Human;Mouse
Recommended dilutions	Western Blot: 1/500 - 1/2000. IHC-p: 1/100-1/300. ELISA: 1/20000. Not yet tested in other applications.
Immunogen	The antiserum was produced against synthesized peptide derived from the Internal region of human PTGDR2. AA range:161-210
Specificity	CD294 Polyclonal Antibody detects endogenous levels of CD294 protein.
Formulation	Liquid in PBS containing 50% glycerol, 0.5% BSA and 0.02% sodium azide..
Storage	Store at -20°C. Avoid repeated freeze-thaw cycles.
Protein Name	Prostaglandin D2 receptor 2
Gene Name	PTGDR2
Cellular localization	Cell membrane ; Multi-pass membrane protein . Internalized receptors colocalized with RAB11A. .
Purification	The antibody was affinity-purified from rabbit antiserum by affinity-chromatography using epitope-specific immunogen.
Clonality	Polyclonal

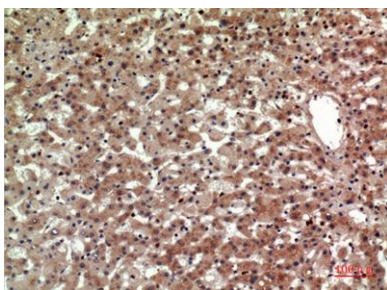
Concentration	1 mg/ml
Observed band	43kD
Human Gene ID	11251
Human Swiss-Prot Number	Q9Y5Y4
Alternative Names	PTGDR2; CRTH2; DL1R; GPR44; Prostaglandin D2 receptor 2; Chemoattractant receptor-homologous molecule expressed on Th2 cells; G-protein coupled receptor 44; CD294

Background

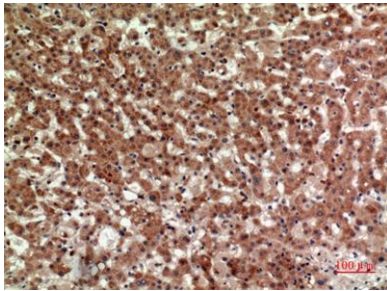
This gene encodes a G-protein-coupled receptor that is preferentially expressed in CD4⁺ effector T helper 2 (Th2) cells. This protein is a prostaglandin D2 receptor that mediates the pro-inflammatory chemotaxis of eosinophils, basophils, and Th2 lymphocytes generated during allergic inflammation. Single nucleotide polymorphisms in the 3' UTR of this gene have been associated with asthma susceptibility.[provided by RefSeq, Mar 2011],



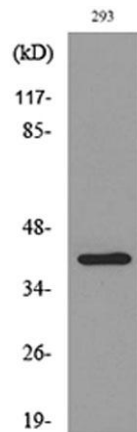
Western Blot analysis of 293 cells using CD294 Polyclonal Antibody. Secondary antibody(catalog#:RS0002) was diluted at 1:20000



Immunohistochemical analysis of paraffin-embedded human-liver, antibody was diluted at 1:100



Immunohistochemical analysis of paraffin-embedded human-liver, antibody was diluted at 1:100



Western blot analysis of lysate from 293 cells, using PTGDR2 Antibody.