

**AACT rabbit pAb****Cat#: orb766996 (Manual)**

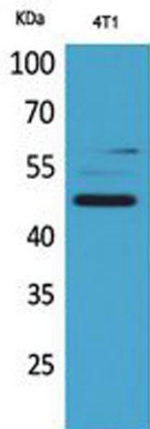
For research use only. Not intended for diagnostic use.

<b>Product Name</b>	AACT rabbit pAb
<b>Host species</b>	Rabbit
<b>Applications</b>	WB;IHC;IF;ELISA
<b>Species Cross-Reactivity</b>	Human;Rat;Mouse;
<b>Recommended dilutions</b>	Western Blot: 1/500 - 1/2000. IHC-p: 1/100-1/300. ELISA: 1/20000. Not yet tested in other applications.
<b>Immunogen</b>	The antiserum was produced against synthesized peptide derived from the Internal region of human SERPINA3. AA range:251-300
<b>Specificity</b>	AACT Polyclonal Antibody detects endogenous levels of AACT protein.
<b>Formulation</b>	Liquid in PBS containing 50% glycerol, 0.5% BSA and 0.02% sodium azide..
<b>Storage</b>	Store at -20°C. Avoid repeated freeze-thaw cycles.
<b>Protein Name</b>	Alpha-1-antichymotrypsin
<b>Gene Name</b>	SERPINA3
<b>Cellular localization</b>	Secreted.
<b>Purification</b>	The antibody was affinity-purified from rabbit antiserum by affinity-chromatography using epitope-specific immunogen.
<b>Clonality</b>	Polyclonal

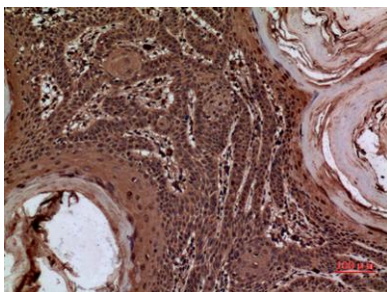
<b>Concentration</b>	1 mg/ml
<b>Observed band</b>	46kD
<b>Human Gene ID</b>	12
<b>Human Swiss-Prot Number</b>	P01011
<b>Alternative Names</b>	SERPINA3; AACT; GIG24; GIG25; Alpha-1-antichymotrypsin; ACT; Cell growth-inhibiting gene 24/25 protein; Serpin A3

## Background

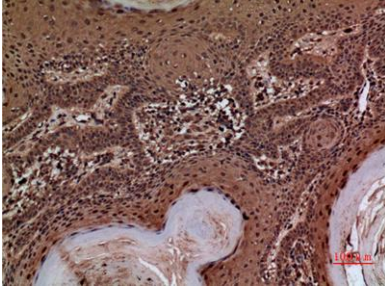
The protein encoded by this gene is a plasma protease inhibitor and member of the serine protease inhibitor class. Polymorphisms in this protein appear to be tissue specific and influence protease targeting. Variations in this protein's sequence have been implicated in Alzheimer's disease, and deficiency of this protein has been associated with liver disease. Mutations have been identified in patients with Parkinson disease and chronic obstructive pulmonary disease. [provided by RefSeq, Jul 2008],



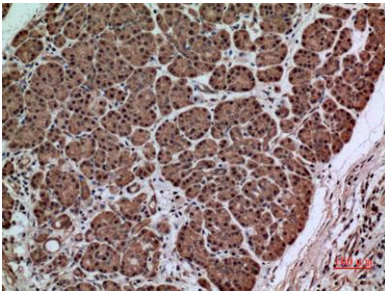
**Western Blot analysis of 4T1 cells using AACT Polyclonal Antibody. Secondary antibody(catalog#:RS0002) was diluted at 1:20000 cells nucleus extracted by Minute™ Cytoplasmic and Nuclear Fractionation kit (SC-003, Inventibiotech, MN, USA).**



**Immunohistochemical analysis of paraffin-embedded human-skin, antibody was diluted at 1:100**



**Immunohistochemical analysis of paraffin-embedded human-skin, antibody was diluted at 1:100**



**Immunohistochemical analysis of paraffin-embedded human-pancreas-cancer, antibody was diluted at 1:100**