

**Glut5 rabbit pAb****Cat#: orb766993 (Manual)**

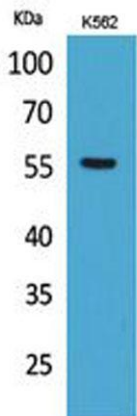
For research use only. Not intended for diagnostic use.

<b>Product Name</b>	Glut5 rabbit pAb
<b>Host species</b>	Rabbit
<b>Applications</b>	WB;ELISA
<b>Species Cross-Reactivity</b>	Human;Rat;Mouse;
<b>Recommended dilutions</b>	Western Blot: 1/500 - 1/2000. ELISA: 1/20000. Not yet tested in other applications.
<b>Immunogen</b>	The antiserum was produced against synthesized peptide derived from the N-terminal region of human SLC2A5. AA range:31-80
<b>Specificity</b>	Glut5 Polyclonal Antibody detects endogenous levels of Glut5 protein.
<b>Formulation</b>	Liquid in PBS containing 50% glycerol, 0.5% BSA and 0.02% sodium azide..
<b>Storage</b>	Store at -20°C. Avoid repeated freeze-thaw cycles.
<b>Protein Name</b>	Solute carrier family 2 facilitated glucose transporter member 5
<b>Gene Name</b>	SLC2A5
<b>Cellular localization</b>	Apical cell membrane ; Multi-pass membrane protein . Cell membrane ; Multi-pass membrane protein . Cell membrane, sarcolemma . Localized on the apical membrane of jejunum villi, but also on lateral plasma membranes of the villi. Transport to the cell memb
<b>Purification</b>	The antibody was affinity-purified from rabbit antiserum by affinity-chromatography using epitope-specific immunogen.

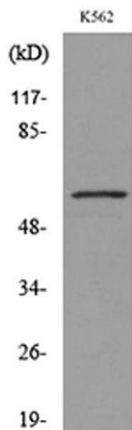
<b>Clonality</b>	Polyclonal
<b>Concentration</b>	1 mg/ml
<b>Observed band</b>	55kD
<b>Human Gene ID</b>	6518
<b>Human Swiss-Prot Number</b>	P22732
<b>Alternative Names</b>	SLC2A5; GLUT5; Solute carrier family 2, facilitated glucose transporter member 5; Fructose transporter; Glucose transporter type 5, small intestine; GLUT-5

## Background

The protein encoded by this gene is a fructose transporter responsible for fructose uptake by the small intestine. The encoded protein also is necessary for the increase in blood pressure due to high dietary fructose consumption. [provided by RefSeq, Jun 2016],



Western Blot analysis of K562 cells using Glut5 Polyclonal Antibody. Secondary antibody(catalog#:RS0002) was diluted at 1:20000



Western blot analysis of lysate from K562 cells, using SLC2A5 Antibody.