

ALPP/ALPPL2 rabbit pAb**Cat#: orb766980 (Manual)**

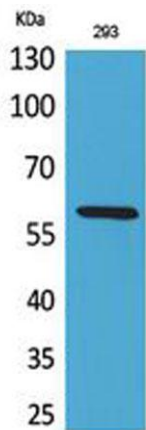
For research use only. Not intended for diagnostic use.

Product Name	ALPP/ALPPL2 rabbit pAb
Host species	Rabbit
Applications	WB;ELISA
Species Cross-Reactivity	Human;Mouse
Recommended dilutions	Western Blot: 1/500 - 1/2000. ELISA: 1/20000. Not yet tested in other applications.
Immunogen	The antiserum was produced against synthesized peptide derived from the N-terminal region of human ALPP/ALPPL2. AA range:1-50
Specificity	ALPP/ALPPL2 Polyclonal Antibody detects endogenous levels of ALPP/ALPPL2 protein.
Formulation	Liquid in PBS containing 50% glycerol, 0.5% BSA and 0.02% sodium azide..
Storage	Store at -20°C. Avoid repeated freeze-thaw cycles.
Protein Name	Alkaline phosphatase, placental type/Alkaline phosphatase, placental-like
Gene Name	ALPP/ALPPL2
Cellular localization	Cell membrane; Lipid-anchor, GPI-anchor .
Purification	The antibody was affinity-purified from rabbit antiserum by affinity-chromatography using epitope-specific immunogen.
Clonality	Polyclonal

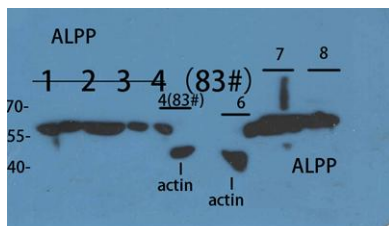
Concentration	1 mg/ml
Observed band	60kD
Human Gene ID	250/251
Human Swiss-Prot Number	P05187/P10696
Alternative Names	ALPP; PLAP; Alkaline phosphatase, placental type; Alkaline phosphatase Regan isozyme; Placental alkaline phosphatase 1; PLAP-1; ALPPL2; ALPPL; Alkaline phosphatase, placental-likeALP-1; Alkaline phosphatase Nagao isozyme; Germ cell alkaline phosphatase; G

Background

The protein encoded by this gene is an alkaline phosphatase, a metalloenzyme that catalyzes the hydrolysis of phosphoric acid monoesters. It belongs to a multigene family composed of four alkaline phosphatase isoenzymes. The enzyme functions as a homodimer and has a catalytic site containing one magnesium and two zinc ions, which are required for its enzymatic function. The protein is primarily expressed in placental and endometrial tissue; however, strong ectopic expression has been detected in ovarian adenocarcinoma, serous cystadenocarcinoma, and other ovarian cancer cells. [provided by RefSeq, Jan 2015],

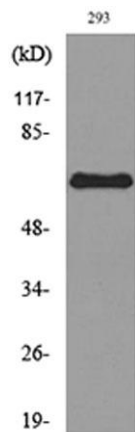


Western Blot analysis of 293 cells using ALPP/ALPPL2 Polyclonal Antibody. Antibody was diluted at 1:2000. Secondary antibody(catalog#:RS0002) was diluted at 1:20000



Western Blot analysis of customer's sample using ALPP/ALPPL2 Polyclonal Antibody. Antibody was diluted at 1:2000. Secondary antibody(catalog#:RS0002) was diluted at 1:20000

1 2 3 4 customer's cell
6 293T
7 Hela
8 K562



Western blot analysis of lysate from 293 cells, using ALPP/ALPPL2 Antibody.