

SCYL1BP1 rabbit pAb**Cat#: orb766974 (Manual)**

For research use only. Not intended for diagnostic use.

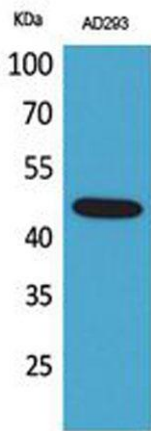
Product Name	SCYL1BP1 rabbit pAb
Host species	Rabbit
Applications	WB;ELISA;IHC
Species Cross-Reactivity	Human;Mouse;Rat
Recommended dilutions	WB 1:500-2000;IHC-p 1:50-300; ELISA 2000-20000
Immunogen	The antiserum was produced against synthesized peptide derived from the N-terminal region of human GORAB. AA range:1-50
Specificity	SCYL1BP1 Polyclonal Antibody detects endogenous levels of SCYL1BP1 protein.
Formulation	Liquid in PBS containing 50% glycerol, 0.5% BSA and 0.02% sodium azide..
Storage	Store at -20°C. Avoid repeated freeze-thaw cycles.
Protein Name	RAB6-interacting golgin
Gene Name	GORAB
Cellular localization	Cytoplasm . Golgi apparatus .
Purification	The antibody was affinity-purified from rabbit antiserum by affinity-chromatography using epitope-specific immunogen.
Clonality	Polyclonal

Explore. Bioreagents.

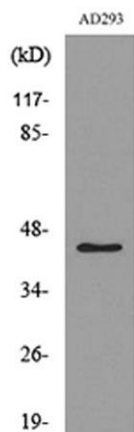
Concentration	1 mg/ml
Observed band	45kD
Human Gene ID	92344
Human Swiss-Prot Number	Q5T7V8
Alternative Names	GORAB; NTKLBP1; SCYL1BP1; RAB6-interacting golgin; N-terminal kinase-like-binding protein 1; NTKL-BP1; NTKL-binding protein 1; hNTKL-BP1; SCY1-like 1-binding protein 1; SCYL1-BP1; SCYL1-binding protein 1

Background

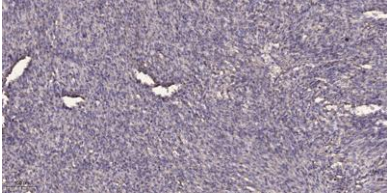
golgin, RAB6 interacting(GORAB) Homo sapiens This gene encodes a member of the golgin family, a group of coiled-coil proteins localized to the Golgi. The encoded protein may function in the secretory pathway. The encoded protein, which also localizes to the cytoplasm, was identified by interactions with the N-terminal kinase-like protein, and thus it may function in mitosis. Mutations in this gene have been associated with geroderma osteodysplastica. Alternatively spliced transcript variants have been described. [provided by RefSeq, Mar 2009],



Western Blot analysis of AD293 cells using SCYL1BP1 Polyclonal Antibody. Secondary antibody(catalog#:RS0002) was diluted at 1:20000



Western blot analysis of lysate from AD293 cells, using GORAB Antibody.



Immunohistochemical analysis of paraffin-embedded human Colon cancer. 1, Antibody was diluted at 1:200(4° overnight). 2, Tris-EDTA,pH9.0 was used for antigen retrieval. 3,Secondary antibody was diluted at 1:200(room temperature, 45min).