

**IFN- $\alpha$ R2 rabbit pAb****Cat#: orb766972 (Manual)**

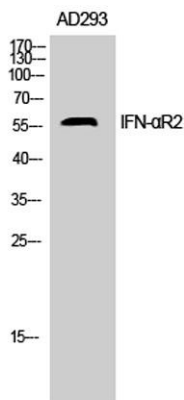
For research use only. Not intended for diagnostic use.

<b>Product Name</b>	IFN- $\alpha$ R2 rabbit pAb
<b>Host species</b>	Rabbit
<b>Applications</b>	WB;IHC;IF;ELISA
<b>Species Cross-Reactivity</b>	Human;Rat;Mouse;
<b>Recommended dilutions</b>	Western Blot: 1/500 - 1/2000. IHC-p: 1/100-1/300. ELISA: 1/20000. Not yet tested in other applications.
<b>Immunogen</b>	The antiserum was produced against synthesized peptide derived from the N-terminal region of human IFNAR2. AA range:41-90
<b>Specificity</b>	IFN- $\alpha$ R2 Polyclonal Antibody detects endogenous levels of IFN- $\alpha$ R2 protein.
<b>Formulation</b>	Liquid in PBS containing 50% glycerol, 0.5% BSA and 0.02% sodium azide..
<b>Storage</b>	Store at -20°C. Avoid repeated freeze-thaw cycles.
<b>Protein Name</b>	Interferon alpha/beta receptor 2
<b>Gene Name</b>	IFNAR2
<b>Cellular localization</b>	[Isoform 1]: Cell membrane ; Single-pass type I membrane protein . ; [Isoform 2]: Cell membrane ; Single-pass type I membrane protein . ; [Isoform 3]: Secreted .
<b>Purification</b>	The antibody was affinity-purified from rabbit antiserum by affinity-chromatography using epitope-specific immunogen.

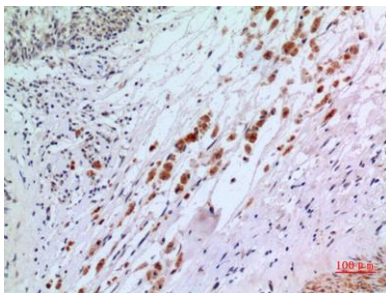
<b>Clonality</b>	Polyclonal
<b>Concentration</b>	1 mg/ml
<b>Observed band</b>	57kD
<b>Human Gene ID</b>	3455
<b>Human Swiss-Prot Number</b>	P48551
<b>Alternative Names</b>	IFNAR2; IFNABR; IFNARB; Interferon alpha/beta receptor 2; IFN-R-2; IFN-alpha binding protein; IFN-alpha/beta receptor 2; Interferon alpha binding protein; Type I interferon receptor 2

## Background

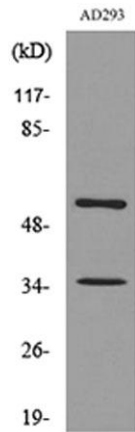
The protein encoded by this gene is a type I membrane protein that forms one of the two chains of a receptor for interferons alpha and beta. Binding and activation of the receptor stimulates Janus protein kinases, which in turn phosphorylate several proteins, including STAT1 and STAT2. Multiple transcript variants encoding at least two different isoforms have been found for this gene. [provided by RefSeq, Jul 2008],



**Western Blot analysis of AD293 cells using IFN- $\alpha$ R2 Polyclonal Antibody. Secondary antibody(catalog#:RS0002) was diluted at 1:20000**



**Immunohistochemical analysis of paraffin-embedded human-brain, antibody was diluted at 1:100**



**Western blot analysis of lysate from AD293 cells, using IFNAR2 Antibody.**