

Fractalkine rabbit pAb**Cat#: orb766959 (Manual)**

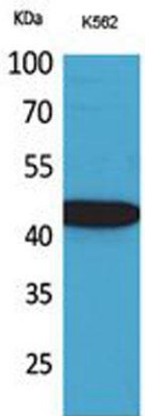
For research use only. Not intended for diagnostic use.

Product Name	Fractalkine rabbit pAb
Host species	Rabbit
Applications	WB;IHC;IF;ELISA
Species Cross-Reactivity	Human;Rat;Mouse;
Recommended dilutions	Western Blot: 1/500 - 1/2000. IHC-p: 1/100-1/300. ELISA: 1/20000. Not yet tested in other applications.
Immunogen	The antiserum was produced against synthesized peptide derived from the Internal region of human CX3CL1. AA range:231-280
Specificity	Fractalkine Polyclonal Antibody detects endogenous levels of Fractalkine protein.
Formulation	Liquid in PBS containing 50% glycerol, 0.5% BSA and 0.02% sodium azide..
Storage	Store at -20°C. Avoid repeated freeze-thaw cycles.
Protein Name	Fractalkine
Gene Name	CX3CL1
Cellular localization	Cell membrane ; Single-pass type I membrane protein .; [Processed fractalkine]: Secreted .
Purification	The antibody was affinity-purified from rabbit antiserum by affinity-chromatography using epitope-specific immunogen.
Clonality	Polyclonal

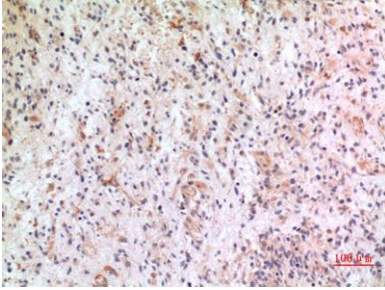
Concentration	1 mg/ml
Observed band	42kD
Human Gene ID	6376
Human Swiss-Prot Number	P78423
Alternative Names	CX3CL1; FKN; NTT; SCYD1; A-152E5.2; Fractalkine; C-X3-C motif chemokine 1; CX3C membrane-anchored chemokine; Neurotactin; Small-inducible cytokine D1

Background

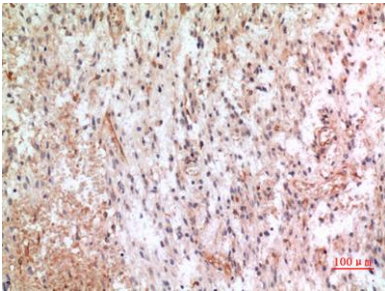
function: The soluble form is chemotactic for T-cells and monocytes, but not for neutrophils. The membrane-bound form promotes adhesion of those leukocytes to endothelial cells. May play a role in regulating leukocyte adhesion and migration processes at the endothelium. Binds to CX3CR1., induction: By TNF and IL-1 in pulmonary endothelial cells and umbilical vein endothelial cells., online information: CX3CL1 entry, PTM: A soluble short 95 kDa form may be released by proteolytic cleavage from the long membrane-anchored form., similarity: Belongs to the intercrine delta family., subunit: Monomer., tissue specificity: Small intestine, colon, testis, prostate, heart, brain, lung, skeletal muscle, kidney and pancreas.,



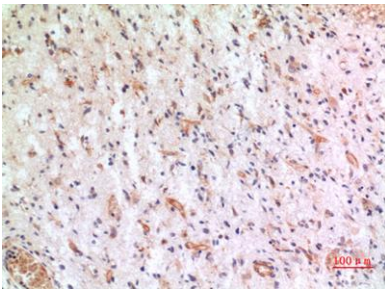
Western Blot analysis of K562 cells using Fractalkine Polyclonal Antibody. Secondary antibody(catalog#:RS0002) was diluted at 1:20000



Immunohistochemical analysis of paraffin-embedded human-brain, antibody was diluted at 1:100



Immunohistochemical analysis of paraffin-embedded human-brain, antibody was diluted at 1:100



Immunohistochemical analysis of paraffin-embedded human-brain, antibody was diluted at 1:100