

GDI-2 rabbit pAb**Cat#: orb766922 (Manual)**

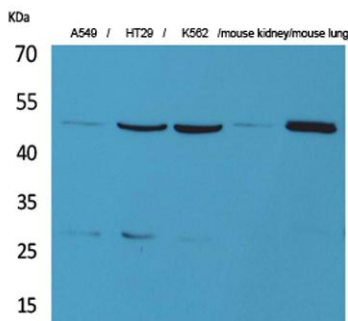
For research use only. Not intended for diagnostic use.

Product Name	GDI-2 rabbit pAb
Host species	Rabbit
Applications	WB;IHC;IF;ELISA
Species Cross-Reactivity	Human;Mouse;Rat
Recommended dilutions	Western Blot: 1/500 - 1/2000. IHC-p: 1/100-1/300. ELISA: 1/20000. Not yet tested in other applications.
Immunogen	Synthesized peptide derived from the C-terminal region of human GDI-2.
Specificity	GDI-2 Polyclonal Antibody detects endogenous levels of GDI-2 protein.
Formulation	Liquid in PBS containing 50% glycerol, 0.5% BSA and 0.02% sodium azide..
Storage	Store at -20°C. Avoid repeated freeze-thaw cycles.
Protein Name	Rab GDP dissociation inhibitor beta
Gene Name	GDI2
Cellular localization	Cytoplasm . Membrane ; Peripheral membrane protein .
Purification	The antibody was affinity-purified from rabbit antiserum by affinity-chromatography using epitope-specific immunogen.
Clonality	Polyclonal

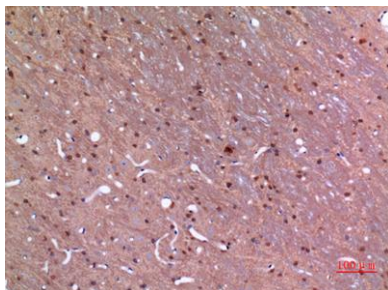
Concentration	1 mg/ml
Observed band	50kD
Human Gene ID	2665
Human Swiss-Prot Number	P50395
Alternative Names	GDI2; RABGDIB; Rab GDP dissociation inhibitor beta; Rab GDI beta; Guanosine diphosphate dissociation inhibitor 2; GDI-2

Background

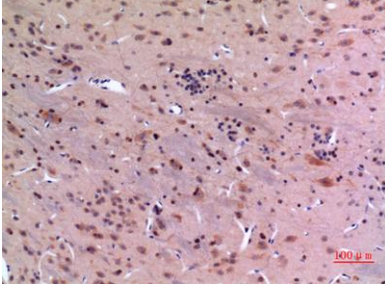
GDP dissociation inhibitors are proteins that regulate the GDP-GTP exchange reaction of members of the rab family, small GTP-binding proteins of the ras superfamily, that are involved in vesicular trafficking of molecules between cellular organelles. GDIs slow the rate of dissociation of GDP from rab proteins and release GDP from membrane-bound rabs. GDI2 is ubiquitously expressed. The GDI2 gene contains many repetitive elements indicating that it may be prone to inversion/deletion rearrangements. Alternative splicing results in multiple transcript variants encoding distinct isoforms. [provided by RefSeq, Jul 2008],



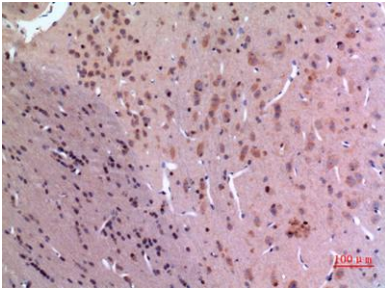
Western Blot analysis of A549, HT29, K562, mouse kidney, mouse lung cells using GDI-2 Polyclonal Antibody. Secondary antibody(catalog#:RS0002) was diluted at 1:20000



Immunohistochemical analysis of paraffin-embedded rat-brain, antibody was diluted at 1:100



Immunohistochemical analysis of paraffin-embedded rat-brain, antibody was diluted at 1:100



Immunohistochemical analysis of paraffin-embedded rat-brain, antibody was diluted at 1:100