

**SCCA1/2 rabbit pAb****Cat#: orb766915 (Manual)**

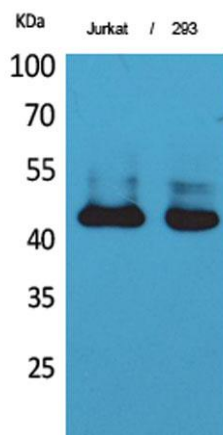
For research use only. Not intended for diagnostic use.

<b>Product Name</b>	SCCA1/2 rabbit pAb
<b>Host species</b>	Rabbit
<b>Applications</b>	WB;IHC;IF;ELISA
<b>Species Cross-Reactivity</b>	Human;Rat;Mouse;
<b>Recommended dilutions</b>	Western Blot: 1/500 - 1/2000. IHC-p: 1/100-1/300. ELISA: 1/20000. Not yet tested in other applications.
<b>Immunogen</b>	The antiserum was produced against synthesized peptide derived from the Internal region of human SERPINB3/4. AA range:111-160
<b>Specificity</b>	SCCA1/2 Polyclonal Antibody detects endogenous levels of SCCA1/2 protein.
<b>Formulation</b>	Liquid in PBS containing 50% glycerol, 0.5% BSA and 0.02% sodium azide..
<b>Storage</b>	Store at -20°C. Avoid repeated freeze-thaw cycles.
<b>Protein Name</b>	Serpin B3/Serpin B4
<b>Gene Name</b>	SERPINB3/SERPINB4
<b>Cellular localization</b>	Cytoplasm . Seems to also be secreted in plasma by cancerous cells but at a low level.
<b>Purification</b>	The antibody was affinity-purified from rabbit antiserum by affinity-chromatography using epitope-specific immunogen.
<b>Clonality</b>	Polyclonal

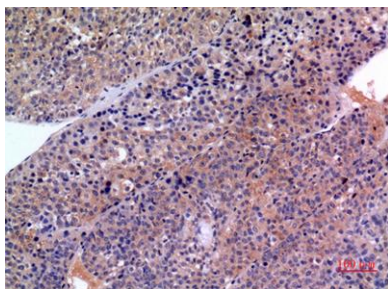
<b>Concentration</b>	1 mg/ml
<b>Observed band</b>	45kD
<b>Human Gene ID</b>	6317
<b>Human Swiss-Prot Number</b>	P29508
<b>Alternative Names</b>	SERPINB3; SCCA; SCCA1; Serpin B3; Protein T4-A; Squamous cell carcinoma antigen 1; SCCA-1

## Background

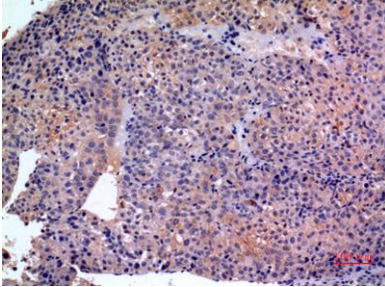
developmental stage:Its expression is closely related to cellular differentiation in both normal and malignant squamous cells.,function:May act as a protease inhibitor to modulate the host immune response against tumor cells.,similarity:Belongs to the serpin family.,similarity:Belongs to the serpin family. Ov-serpin subfamily.,subcellular location:Seems to also be secreted in plasma by cancerous cells but at a low level.,tissue specificity:Squamous cells. Expressed in some hepatocellular carcinoma (at protein level).,



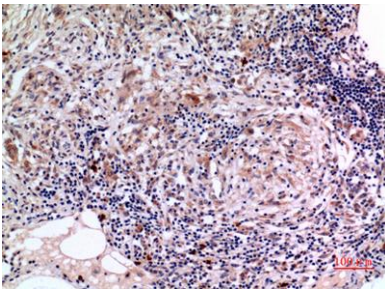
**Western Blot analysis of Jurkat, 293 cells using SCCA1/2 Polyclonal Antibody. Secondary antibody(catalog#:RS0002) was diluted at 1:20000**



**Immunohistochemical analysis of paraffin-embedded human-liver-cancer, antibody was diluted at 1:100**



**Immunohistochemical analysis of paraffin-embedded human-liver-cancer, antibody was diluted at 1:100**



**Immunohistochemical analysis of paraffin-embedded human-lung, antibody was diluted at 1:100**