

IL-28 rabbit pAb**Cat#: orb766910 (Manual)**

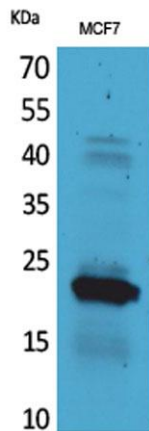
For research use only. Not intended for diagnostic use.

Product Name	IL-28 rabbit pAb
Host species	Rabbit
Applications	WB;IHC;IF;ELISA
Species Cross-Reactivity	Human;Rat;Mouse;
Recommended dilutions	Western Blot: 1/500 - 1/2000. IHC-p: 1/100-1/300. ELISA: 1/20000. Not yet tested in other applications.
Immunogen	The antiserum was produced against synthesized peptide derived from the C-terminal region of human IL28A. AA range:131-180
Specificity	IL-28 Polyclonal Antibody detects endogenous levels of IL-28 protein.
Formulation	Liquid in PBS containing 50% glycerol, 0.5% BSA and 0.02% sodium azide..
Storage	Store at -20°C. Avoid repeated freeze-thaw cycles.
Protein Name	Interleukin-28A
Gene Name	IL28A
Cellular localization	Secreted .
Purification	The antibody was affinity-purified from rabbit antiserum by affinity-chromatography using epitope-specific immunogen.
Clonality	Polyclonal

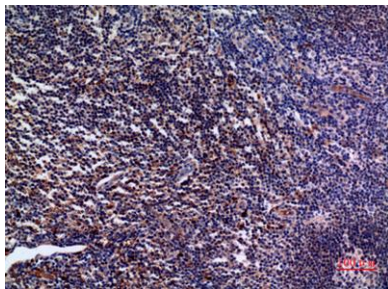
Concentration	1 mg/ml
Observed band	25kD
Human Gene ID	282616
Human Swiss-Prot Number	Q8IZJ0
Alternative Names	IL28A; IFNL2; ZCYTO20; Interleukin-28A; IL-28A; Cytokine Zcyto20; Interferon lambda-2; IFN-lambda-2

Background

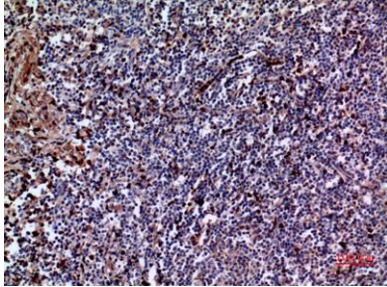
This gene encodes a cytokine distantly related to type I interferons and the IL-10 family. This gene, interleukin 28B (IL28B), and interleukin 29 (IL29) are three closely related cytokine genes that form a cytokine gene cluster on a chromosomal region mapped to 19q13. Expression of the cytokines encoded by the three genes can be induced by viral infection. All three cytokines have been shown to interact with a heterodimeric class II cytokine receptor that consists of interleukin 10 receptor, beta (IL10RB) and interleukin 28 receptor, alpha (IL28RA). [provided by RefSeq, Jul 2008],



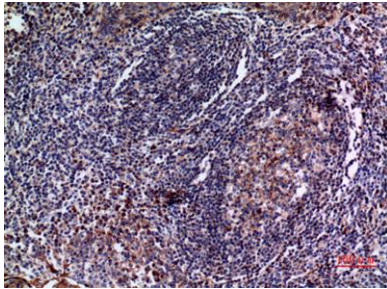
Western Blot analysis of MCF7 cells using IL-28 Polyclonal Antibody. Secondary antibody(catalog#:RS0002) was diluted at 1:20000



Immunohistochemical analysis of paraffin-embedded human-tonsil, antibody was diluted at 1:100



Immunohistochemical analysis of paraffin-embedded human-tonsil, antibody was diluted at 1:100



Immunohistochemical analysis of paraffin-embedded human-tonsil, antibody was diluted at 1:100