

**PDGF-D rabbit pAb****Cat#: orb766904 (Manual)**

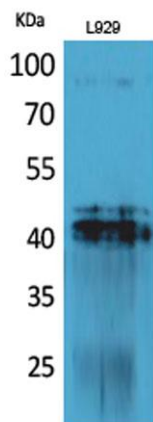
For research use only. Not intended for diagnostic use.

|                                 |  |
|---------------------------------|--|
| <b>Product Name</b>             | PDGF-D rabbit pAb  |
| <b>Host species</b>             | Rabbit   |
| <b>Applications</b>             | WB;IHC;IF;ELISA  |
| <b>Species Cross-Reactivity</b> | Human;Rat;Mouse;   |
| <b>Recommended dilutions</b>    | Western Blot: 1/500 - 1/2000. IHC-p: 1/100-1/300. ELISA: 1/20000. Not yet tested in other applications.                    |
| <b>Immunogen</b>                | The antiserum was produced against synthesized peptide derived from the C-terminal region of human PDGFD. AA range:311-360 |
| <b>Specificity</b>              | PDGF-D Polyclonal Antibody detects endogenous levels of PDGF-D protein.  |
| <b>Formulation</b>              | Liquid in PBS containing 50% glycerol, 0.5% BSA and 0.02% sodium azide..   |
| <b>Storage</b>                  | Store at -20°C. Avoid repeated freeze-thaw cycles.   |
| <b>Protein Name</b>             | Platelet-derived growth factor D   |
| <b>Gene Name</b>                | PDGFD  |
| <b>Cellular localization</b>    | Secreted . Released by platelets upon wounding.  |
| <b>Purification</b>             | The antibody was affinity-purified from rabbit antiserum by affinity-chromatography using epitope-specific immunogen.      |
| <b>Clonality</b>                | Polyclonal   |

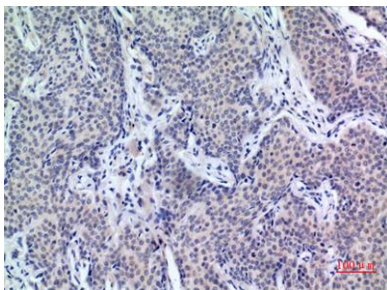
|                                |  |
|--------------------------------|--|
| <b>Concentration</b>           | 1 mg/ml  |
| <b>Observed band</b>           | 42kD   |
| <b>Human Gene ID</b>           | 80310  |
| <b>Human Swiss-Prot Number</b> | Q9GZP0   |
| <b>Alternative Names</b>       | PDGFD; IEGF; SCDGFB; MSTP036; Platelet-derived growth factor D; PDGF-D; Iris-expressed growth factor; Spinal cord-derived growth factor B; SCDGF-B |

## Background

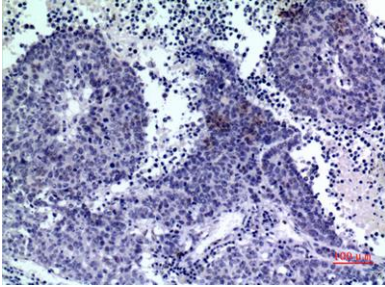
platelet derived growth factor D(PDGFD) Homo sapiens The protein encoded by this gene is a member of the platelet-derived growth factor family. The four members of this family are mitogenic factors for cells of mesenchymal origin and are characterized by a core motif of eight cysteines, seven of which are found in this factor. This gene product only forms homodimers and, therefore, does not dimerize with the other three family members. It differs from alpha and beta members of this family in having an unusual N-terminal domain, the CUB domain. Two splice variants have been identified for this gene. [provided by RefSeq, Jul 2008],



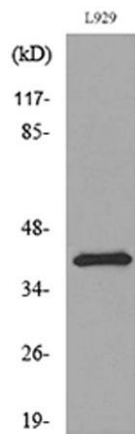
**Western Blot analysis of L929 cells using PDGF-D Polyclonal Antibody. Secondary antibody(catalog#:RS0002) was diluted at 1:20000**



**Immunohistochemical analysis of paraffin-embedded human-mammary-cancer, antibody was diluted at 1:100**



Immunohistochemical analysis of paraffin-embedded human-lung-cancer, antibody was diluted at 1:100



Western blot analysis of lysate from L929 cells, using PDGFD Antibody.