

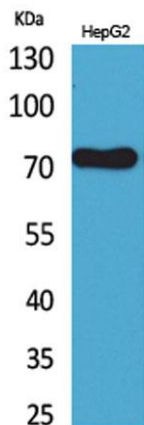
CD229 rabbit pAb**Cat#: orb766876 (Manual)**

For research use only. Not intended for diagnostic use.

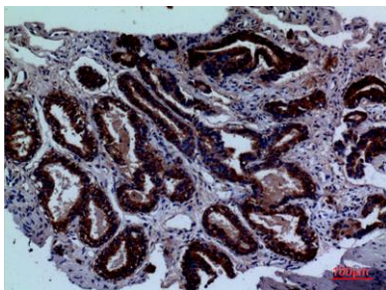
Product Name	CD229 rabbit pAb
Host species	Rabbit
Applications	WB;IHC;IF;ELISA
Species Cross-Reactivity	Human;Rat;Mouse;
Recommended dilutions	Western Blot: 1/500 - 1/2000. IHC-p: 1:100-300 ELISA: 1/20000. Not yet tested in other applications.
Immunogen	The antiserum was produced against synthesized peptide derived from the Internal region of human LY9. AA range:261-310
Specificity	CD229 Polyclonal Antibody detects endogenous levels of CD229 protein.
Formulation	Liquid in PBS containing 50% glycerol, 0.5% BSA and 0.02% sodium azide..
Storage	Store at -20°C. Avoid repeated freeze-thaw cycles.
Protein Name	T-lymphocyte surface antigen Ly-9
Gene Name	LY9
Cellular localization	Membrane; Single-pass type I membrane protein. Cell membrane .
Purification	The antibody was affinity-purified from rabbit antiserum by affinity-chromatography using epitope-specific immunogen.
Clonality	Polyclonal

Concentration	1 mg/ml
Observed band	72kD
Human Gene ID	4063
Human Swiss-Prot Number	Q9HBG7
Alternative Names	LY9; CDABP0070; T-lymphocyte surface antigen Ly-9; Cell surface molecule Ly-9; Lymphocyte antigen 9; CD229

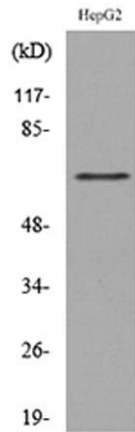
Background LY9 belongs to the SLAM family of immunomodulatory receptors (see SLAMF1; MIM 603492) and interacts with the adaptor molecule SAP (SH2D1A; MIM 300490) (Graham et al., 2006 [PubMed 16365421]).[supplied by OMIM, Mar 2008].



Western Blot analysis of HepG2 cells using CD229 Polyclonal Antibody. Secondary antibody(catalog#:RS0002) was diluted at 1:20000



Immunohistochemical analysis of paraffin-embedded human-prostate-cancer, antibody was diluted at 1:100



Western blot analysis of lysate from HepG2 cells, using LY9 Antibody.