

CD248 rabbit pAb**Cat#: orb766872 (Manual)**

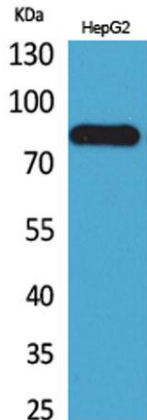
For research use only. Not intended for diagnostic use.

| | |
|---------------------------------|--|
| Product Name | CD248 rabbit pAb |
| Host species | Rabbit |
| Applications | WB;ELISA |
| Species Cross-Reactivity | Human;Rat;Mouse; |
| Recommended dilutions | Western Blot: 1/500 - 1/2000. ELISA: 1/20000. Not yet tested in other applications. |
| Immunogen | The antiserum was produced against synthesized peptide derived from the Internal region of human CD248. AA range:341-390 |
| Specificity | CD248 Polyclonal Antibody detects endogenous levels of CD248 protein. |
| Formulation | Liquid in PBS containing 50% glycerol, 0.5% BSA and 0.02% sodium azide.. |
| Storage | Store at -20°C. Avoid repeated freeze-thaw cycles. |
| Protein Name | Endosialin |
| Gene Name | CD248 |
| Cellular localization | Membrane ; Single-pass type I membrane protein . |
| Purification | The antibody was affinity-purified from rabbit antiserum by affinity-chromatography using epitope-specific immunogen. |
| Clonality | Polyclonal |

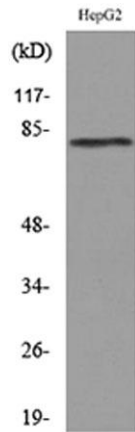
| | |
|--------------------------------|---|
| Concentration | 1 mg/ml |
| Observed band | 80kD |
| Human Gene ID | 57124 |
| Human Swiss-Prot Number | Q9HCU0 |
| Alternative Names | CD248; CD164L1; TEM1; Endosialin; Tumor endothelial marker 1; CD248 |

Background

function:May play a role in tumor angiogenesis.,online information:Endosialin,PTM:May be N-glycosylated.,PTM:O-glycosylated with sialylated oligosaccharides.,similarity:Contains 1 C-type lectin domain.,similarity:Contains 1 EGF-like domain.,similarity:Contains 1 Sushi (CCP/SCR) domain.,tissue specificity:Expressed in tumor endothelial cells but absent or barely detectable in normal endothelial cells. Expressed in metastatic lesions of the liver and during angiogenesis of corpus luteum formation and wound healing. Expressed in vascular endothelial cells of malignant tumors but not in normal blood vessels. Expressed in stromal fibroblasts.,



Western Blot analysis of HepG2 cells using CD248 Polyclonal Antibody. Secondary antibody(catalog#:RS0002) was diluted at 1:20000



Western blot analysis of lysate from HepG2 cells, using CD248 Antibody.