

GGT1 rabbit pAb**Cat#: orb766871 (Manual)**

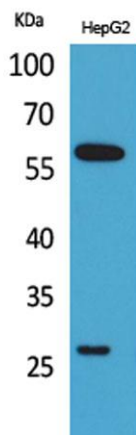
For research use only. Not intended for diagnostic use.

| | |
|---------------------------------|---|
| Product Name | GGT1 rabbit pAb |
| Host species | Rabbit |
| Applications | WB;IHC;IF;ELISA |
| Species Cross-Reactivity | Human;Rat;Mouse; |
| Recommended dilutions | Western Blot: 1/500 - 1/2000. IHC-p: 1:100-300 ELISA: 1/20000. Not yet tested in other applications. |
| Immunogen | The antiserum was produced against synthesized peptide derived from the N-terminal region of human GGT1. AA range:21-70 |
| Specificity | GGT1 Polyclonal Antibody detects endogenous levels of GGT1 protein. |
| Formulation | Liquid in PBS containing 50% glycerol, 0.5% BSA and 0.02% sodium azide.. |
| Storage | Store at -20°C. Avoid repeated freeze-thaw cycles. |
| Protein Name | Gamma-glutamyltranspeptidase 1 |
| Gene Name | GGT1 |
| Cellular localization | Cell membrane ; Single-pass type II membrane protein . |
| Purification | The antibody was affinity-purified from rabbit antiserum by affinity-chromatography using epitope-specific immunogen. |
| Clonality | Polyclonal |

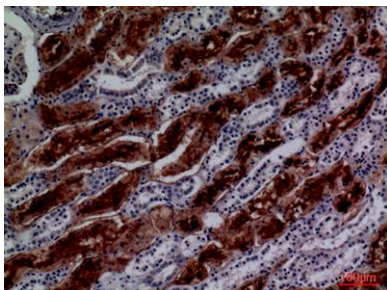
| | |
|--------------------------------|---|
| Concentration | 1 mg/ml |
| Observed band | 61kD |
| Human Gene ID | 2678 |
| Human Swiss-Prot Number | P19440 |
| Alternative Names | GGT1; GGT; Gamma-glutamyltranspeptidase 1; GGT 1; Gamma-glutamyltransferase 1; Glutathione hydrolase 1; Leukotriene-C4 hydrolase; CD224 |

Background

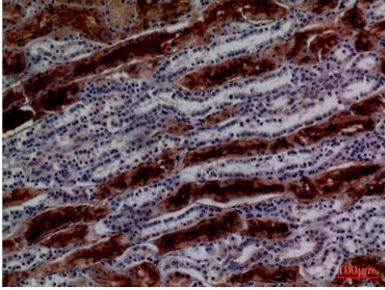
The enzyme encoded by this gene is a type I gamma-glutamyltransferase that catalyzes the transfer of the glutamyl moiety of glutathione to a variety of amino acids and dipeptide acceptors. The enzyme is composed of a heavy chain and a light chain, which are derived from a single precursor protein. It is expressed in tissues involved in absorption and secretion and may contribute to the etiology of diabetes and other metabolic disorders. Multiple alternatively spliced variants have been identified. There are a number of related genes present on chromosomes 20 and 22, and putative pseudogenes for this gene on chromosomes 2, 13, and 22. [provided by RefSeq, Jan 2014],



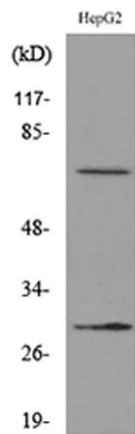
Western Blot analysis of HepG2 cells using GGT1 Polyclonal Antibody. Secondary antibody(catalog#:RS0002) was diluted at 1:20000



Immunohistochemical analysis of paraffin-embedded human-kidney, antibody was diluted at 1:100



Immunohistochemical analysis of paraffin-embedded human-kidney, antibody was diluted at 1:100



Western blot analysis of lysate from HepG2 cells, using GGT1 Antibody.