

**PEPCK-C rabbit pAb****Cat#: orb766841 (Manual)**

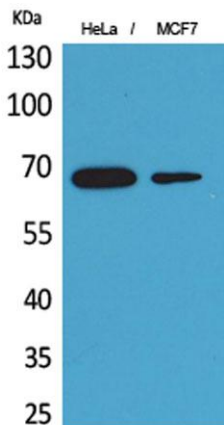
For research use only. Not intended for diagnostic use.

<b>Product Name</b>	PEPCK-C rabbit pAb
<b>Host species</b>	Rabbit
<b>Applications</b>	WB;IHC;IF;ELISA
<b>Species Cross-Reactivity</b>	Human;Mouse;Rat
<b>Recommended dilutions</b>	Western Blot: 1/500 - 1/2000. IHC-p: 1:100-300 ELISA: 1/20000. Not yet tested in other applications.
<b>Immunogen</b>	The antiserum was produced against synthesized peptide derived from the Internal region of human PCK1. AA range:491-540
<b>Specificity</b>	PEPCK-C Polyclonal Antibody detects endogenous levels of PEPCK-C protein.
<b>Formulation</b>	Liquid in PBS containing 50% glycerol, 0.5% BSA and 0.02% sodium azide..
<b>Storage</b>	Store at -20°C. Avoid repeated freeze-thaw cycles.
<b>Protein Name</b>	Phosphoenolpyruvate carboxykinase cytosolic [GTP]
<b>Gene Name</b>	PCK1
<b>Cellular localization</b>	Cytoplasm, cytosol . Endoplasmic reticulum . Phosphorylation at Ser-90 promotes translocation to the endoplasmic reticulum. .
<b>Purification</b>	The antibody was affinity-purified from rabbit antiserum by affinity-chromatography using epitope-specific immunogen.
<b>Clonality</b>	Polyclonal

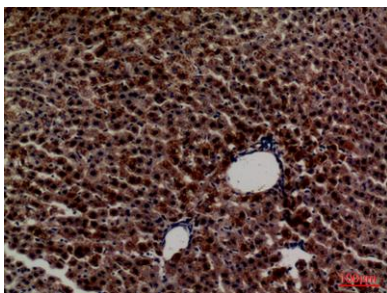
<b>Concentration</b>	1 mg/ml
<b>Observed band</b>	65kD
<b>Human Gene ID</b>	5105
<b>Human Swiss-Prot Number</b>	P35558
<b>Alternative Names</b>	PCK1; PEPCK1; Phosphoenolpyruvate carboxykinase, cytosolic [GTP]; PEPCK-C; Phosphoenolpyruvate carboxylase

**Background**

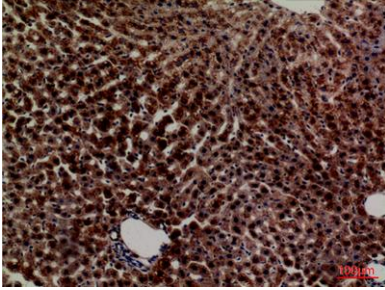
This gene is a main control point for the regulation of gluconeogenesis. The cytosolic enzyme encoded by this gene, along with GTP, catalyzes the formation of phosphoenolpyruvate from oxaloacetate, with the release of carbon dioxide and GDP. The expression of this gene can be regulated by insulin, glucocorticoids, glucagon, cAMP, and diet. Defects in this gene are a cause of cytosolic phosphoenolpyruvate carboxykinase deficiency. A mitochondrial isozyme of the encoded protein also has been characterized. [provided by RefSeq, Jul 2008],



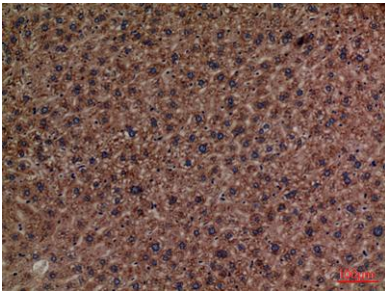
**Western Blot analysis of HeLa, MCF7 cells using PEPCK-C Polyclonal Antibody. Secondary antibody(catalog#:RS0002) was diluted at 1:20000**



**Immunohistochemical analysis of paraffin-embedded rat-liver, antibody was diluted at 1:100**



**Immunohistochemical analysis of paraffin-embedded rat-liver, antibody was diluted at 1:100**



**Immunohistochemical analysis of paraffin-embedded mouse-liver, antibody was diluted at 1:100**