

Neuropilin-2 rabbit pAb**Cat#: orb766835 (Manual)**

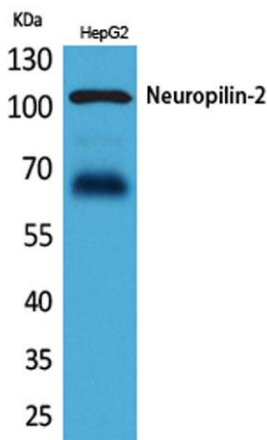
For research use only. Not intended for diagnostic use.

Product Name	Neuropilin-2 rabbit pAb
Host species	Rabbit
Applications	WB;IHC;IF;ELISA
Species Cross-Reactivity	Human;Mouse;Rat
Recommended dilutions	Western Blot: 1/500 - 1/2000. IHC-p: 1:100-300 ELISA: 1/20000. Not yet tested in other applications.
Immunogen	The antiserum was produced against synthesized peptide derived from the Internal region of human NRP2. AA range:791-840
Specificity	Neuropilin-2 Polyclonal Antibody detects endogenous levels of Neuropilin-2 protein.
Formulation	Liquid in PBS containing 50% glycerol, 0.5% BSA and 0.02% sodium azide..
Storage	Store at -20°C. Avoid repeated freeze-thaw cycles.
Protein Name	Neuropilin-2
Gene Name	NRP2
Cellular localization	Membrane ; Single-pass type I membrane protein .; [Isoform s9]: Secreted .
Purification	The antibody was affinity-purified from rabbit antiserum by affinity-chromatography using epitope-specific immunogen.
Clonality	Polyclonal

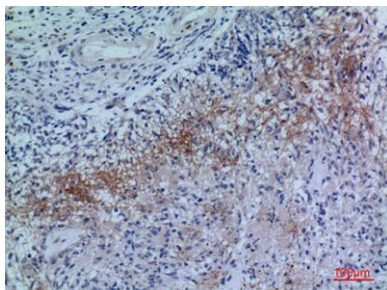
Concentration	1 mg/ml
Observed band	100kD
Human Gene ID	8828
Human Swiss-Prot Number	O60462
Alternative Names	NRP2; VEGF165R2; Neuropilin-2; Vascular endothelial cell growth factor 165 receptor 2

Background

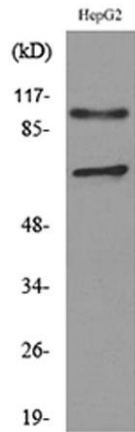
This gene encodes a member of the neuropilin family of receptor proteins. The encoded transmembrane protein binds to SEMA3C protein {sema domain, immunoglobulin domain (Ig), short basic domain, secreted, (semaphorin) 3C} and SEMA3F protein {sema domain, immunoglobulin domain (Ig), short basic domain, secreted, (semaphorin) 3F}, and interacts with vascular endothelial growth factor (VEGF). This protein may play a role in cardiovascular development, axon guidance, and tumorigenesis. Multiple transcript variants encoding distinct isoforms have been identified for this gene. [provided by RefSeq, Jul 2008],



Western Blot analysis of HepG2 cells using Neuropilin-2 Polyclonal Antibody. Secondary antibody(catalog#:RS0002) was diluted at 1:20000



Immunohistochemical analysis of paraffin-embedded human-brain, antibody was diluted at 1:100



Western blot analysis of lysate from HepG2 cells, using NRP2 Antibody.