

ERp57 rabbit pAb**Cat#: orb766825 (Manual)**

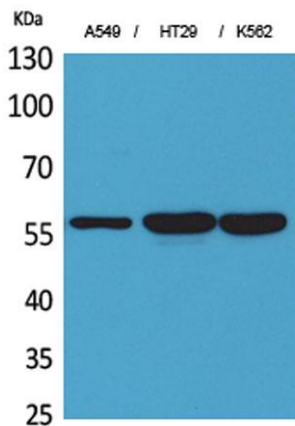
For research use only. Not intended for diagnostic use.

Product Name	ERp57 rabbit pAb
Host species	Rabbit
Applications	WB;IHC;IF;ELISA
Species Cross-Reactivity	Human;Mouse;Rat
Recommended dilutions	Western Blot: 1/500 - 1/2000. IHC-p: 1:100-300 ELISA: 1/20000. Not yet tested in other applications.
Immunogen	The antiserum was produced against synthesized peptide derived from the Internal region of human PDIA3. AA range:111-160
Specificity	ERp57 Polyclonal Antibody detects endogenous levels of ERp57 protein.
Formulation	Liquid in PBS containing 50% glycerol, 0.5% BSA and 0.02% sodium azide..
Storage	Store at -20°C. Avoid repeated freeze-thaw cycles.
Protein Name	Protein disulfide-isomerase A3
Gene Name	PDIA3
Cellular localization	Endoplasmic reticulum . Endoplasmic reticulum lumen . Melanosome . Identified by mass spectrometry in melanosome fractions from stage I to stage IV (PubMed:12643545). .
Purification	The antibody was affinity-purified from rabbit antiserum by affinity-chromatography using epitope-specific immunogen.

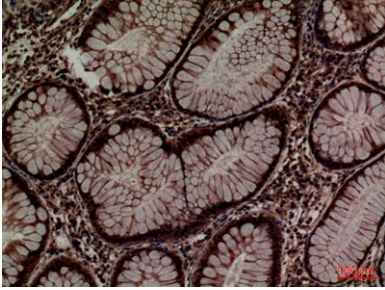
Clonality	Polyclonal
Concentration	1 mg/ml
Observed band	55kD
Human Gene ID	2923
Human Swiss-Prot Number	P30101
Alternative Names	PDIA3; ERP57; ERP60; GRP58; Protein disulfide-isomerase A3; 58 kDa glucose-regulated protein; 58 kDa microsomal protein; p58; Disulfide isomerase ER-60; Endoplasmic reticulum resident protein 57; ER protein 57; ERp57; Endoplasmic reticulum resident protein

Background

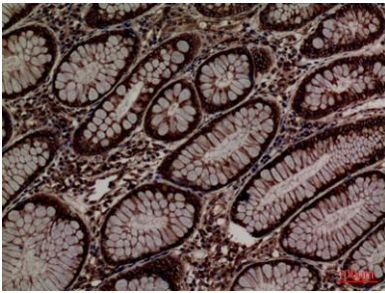
This gene encodes a protein of the endoplasmic reticulum that interacts with lectin chaperones calreticulin and calnexin to modulate folding of newly synthesized glycoproteins. The protein was once thought to be a phospholipase; however, it has been demonstrated that the protein actually has protein disulfide isomerase activity. It is thought that complexes of lectins and this protein mediate protein folding by promoting formation of disulfide bonds in their glycoprotein substrates. [provided by RefSeq, Jul 2008],



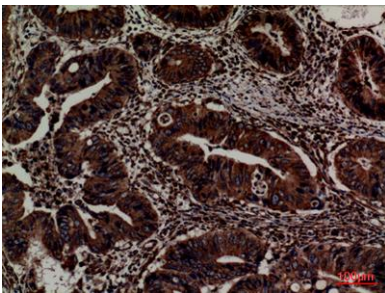
Western Blot analysis of A549, HT29, K562 cells using ERp57 Polyclonal Antibody. Secondary antibody(catalog#:RS0002) was diluted at 1:20000



Immunohistochemical analysis of paraffin-embedded human-colon, antibody was diluted at 1:100



Immunohistochemical analysis of paraffin-embedded human-colon, antibody was diluted at 1:100



Immunohistochemical analysis of paraffin-embedded human-colon, antibody was diluted at 1:100