

**FOXP1 rabbit pAb****Cat#: orb766818 (Manual)**

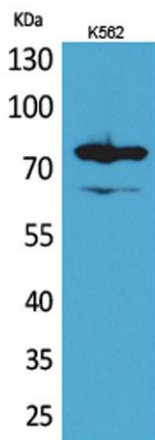
For research use only. Not intended for diagnostic use.

<b>Product Name</b>	FOXP1 rabbit pAb
<b>Host species</b>	Rabbit
<b>Applications</b>	WB;IHC;IF;ELISA
<b>Species Cross-Reactivity</b>	Human;Mouse;Rat
<b>Recommended dilutions</b>	Western Blot: 1/500 - 1/2000. IHC-p: 1:100-300 ELISA: 1/20000. Not yet tested in other applications.
<b>Immunogen</b>	The antiserum was produced against synthesized peptide derived from the C-terminal region of human FOXP1. AA range:628-677
<b>Specificity</b>	FOXP1 Polyclonal Antibody detects endogenous levels of FOXP1 protein.
<b>Formulation</b>	Liquid in PBS containing 50% glycerol, 0.5% BSA and 0.02% sodium azide..
<b>Storage</b>	Store at -20°C. Avoid repeated freeze-thaw cycles.
<b>Protein Name</b>	Forkhead box protein P1
<b>Gene Name</b>	FOXP1
<b>Cellular localization</b>	Nucleus . Not found in the nucleolus. .
<b>Purification</b>	The antibody was affinity-purified from rabbit antiserum by affinity-chromatography using epitope-specific immunogen.
<b>Clonality</b>	Polyclonal

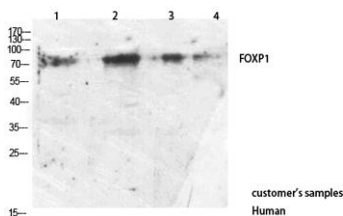
<b>Concentration</b>	1 mg/ml
<b>Observed band</b>	75kD
<b>Human Gene ID</b>	27086
<b>Human Swiss-Prot Number</b>	Q9H334
<b>Alternative Names</b>	FOXP1; HSPC215; Forkhead box protein P1

## Background

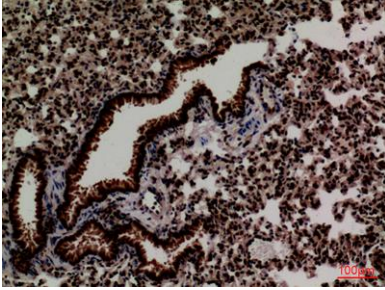
This gene belongs to subfamily P of the forkhead box (FOX) transcription factor family. Forkhead box transcription factors play important roles in the regulation of tissue- and cell type-specific gene transcription during both development and adulthood. Forkhead box P1 protein contains both DNA-binding- and protein-protein binding-domains. This gene may act as a tumor suppressor as it is lost in several tumor types and maps to a chromosomal region (3p14.1) reported to contain a tumor suppressor gene(s). Alternative splicing results in multiple transcript variants encoding different isoforms. [provided by RefSeq, Jul 2008].



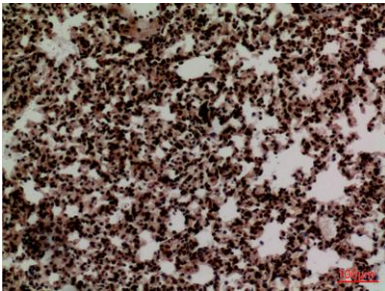
**Western Blot analysis of K562 cells using FOXP1 Polyclonal Antibody. Antibody was diluted at 1:1000. Secondary antibody(catalog#:RS0002) was diluted at 1:20000 cells nucleus extracted by Minute TM Cytoplasmic and Nuclear Fractionation kit (SC-003, Inventbiotech, MN, USA).**



**Western Blot analysis of customer's using FOXP1 Antibody Polyclonal Antibody.**



**Immunohistochemical analysis of paraffin-embedded mouse-lung, antibody was diluted at 1:100**



**Immunohistochemical analysis of paraffin-embedded mouse-lung, antibody was diluted at 1:100**