

**Fascin 1 rabbit pAb****Cat#: orb766817 (Manual)**

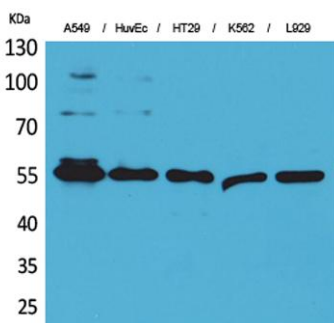
For research use only. Not intended for diagnostic use.

|                                 |   |
|---------------------------------|---|
| <b>Product Name</b>             | Fascin 1 rabbit pAb   |
| <b>Host species</b>             | Rabbit  |
| <b>Applications</b>             | WB;IHC;IF;ELISA   |
| <b>Species Cross-Reactivity</b> | Human;Mouse;Rat   |
| <b>Recommended dilutions</b>    | Western Blot: 1/500 - 1/2000. IHC-p: 1:100-300 ELISA: 1/20000. Not yet tested in other applications.  |
| <b>Immunogen</b>                | The antiserum was produced against synthesized peptide derived from the Internal region of human FSCN1. AA range:261-310  |
| <b>Specificity</b>              | Fascin 1 Polyclonal Antibody detects endogenous levels of Fascin 1 protein.   |
| <b>Formulation</b>              | Liquid in PBS containing 50% glycerol, 0.5% BSA and 0.02% sodium azide..  |
| <b>Storage</b>                  | Store at -20°C. Avoid repeated freeze-thaw cycles.  |
| <b>Protein Name</b>             | Fascin  |
| <b>Gene Name</b>                | FSCN1   |
| <b>Cellular localization</b>    | Cytoplasm, cytosol . Cytoplasm, cell cortex . Cytoplasm, cytoskeleton . Cytoplasm, cytoskeleton, stress fiber . Cell projection, filopodium . Cell projection, invadopodium . Cell projection, microvillus . Cell junction . Colocalized with RUFY3 and F-actin at filipodia of the axonal growth cone. Colocalized with DBN1 and F-actin at the transitional domain of the axonal growth cone (By similarity). . |

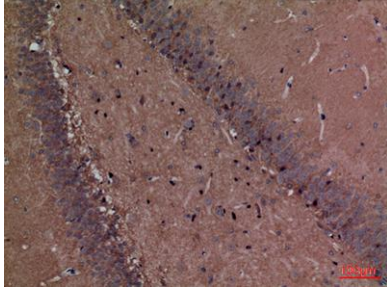
|                                |   |
|--------------------------------|---|
| <b>Purification</b>            | The antibody was affinity-purified from rabbit antiserum by affinity-chromatography using epitope-specific immunogen. |
| <b>Clonality</b>               | Polyclonal  |
| <b>Concentration</b>           | 1 mg/ml   |
| <b>Observed band</b>           | 55kD  |
| <b>Human Gene ID</b>           | 6624  |
| <b>Human Swiss-Prot Number</b> | Q16658  |
| <b>Alternative Names</b>       | FSCN1; FAN1; HSN; SNL; Fascin; 55 kDa actin-bundling protein; Singed-like protein; p55                                |

**Background**

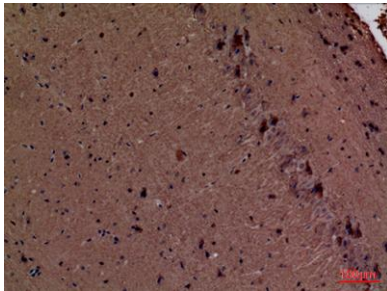
This gene encodes a member of the fascin family of actin-binding proteins. Fascin proteins organize F-actin into parallel bundles, and are required for the formation of actin-based cellular protrusions. The encoded protein plays a critical role in cell migration, motility, adhesion and cellular interactions. Expression of this gene is known to be regulated by several microRNAs, and overexpression of this gene may play a role in the metastasis of multiple types of cancer by increasing cell motility. Expression of this gene is also a marker for Reed-Sternberg cells in Hodgkin's lymphoma. A pseudogene of this gene is located on the long arm of chromosome 15. [provided by RefSeq, Sep 2011],



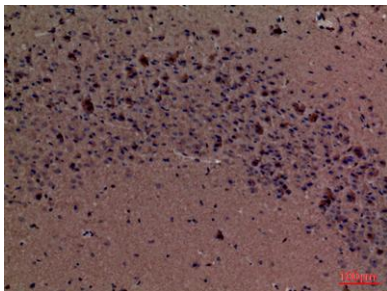
**Western Blot analysis of A549, HuvEc, HT29, K562, L929 cells using Fascin 1 Polyclonal Antibody. Secondary antibody(catalog#:RS0002) was diluted at 1:20000**



**Immunohistochemical analysis of paraffin-embedded rat-brain, antibody was diluted at 1:100**



**Immunohistochemical analysis of paraffin-embedded mouse-brain, antibody was diluted at 1:100**



**Immunohistochemical analysis of paraffin-embedded mouse-brain, antibody was diluted at 1:100**