

**SP-A rabbit pAb****Cat#: orb766796 (Manual)**

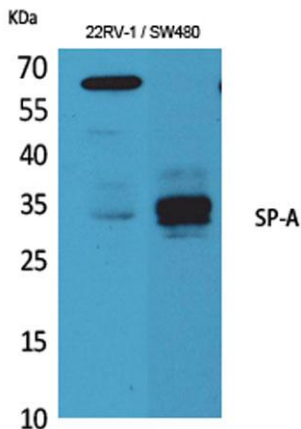
For research use only. Not intended for diagnostic use.

<b>Product Name</b>	SP-A rabbit pAb
<b>Host species</b>	Rabbit
<b>Applications</b>	WB;IHC;IF;ELISA
<b>Species Cross-Reactivity</b>	Human;Mouse;Rat
<b>Recommended dilutions</b>	Western Blot: 1/500 - 1/2000. IHC-p: 1:100-300 ELISA: 1/20000. Not yet tested in other applications.
<b>Immunogen</b>	The antiserum was produced against synthesized peptide derived from the Internal region of human SFTPA1/2. AA range:141-190
<b>Specificity</b>	SP-A Polyclonal Antibody detects endogenous levels of SP-A protein.
<b>Formulation</b>	Liquid in PBS containing 50% glycerol, 0.5% BSA and 0.02% sodium azide..
<b>Storage</b>	Store at -20°C. Avoid repeated freeze-thaw cycles.
<b>Protein Name</b>	Pulmonary surfactant-associated protein A2/Pulmonary surfactant-associated protein A1
<b>Gene Name</b>	SFTPA2/SFTPA1
<b>Cellular localization</b>	Secreted . Secreted, extracellular space, extracellular matrix. Secreted, extracellular space, surface film.
<b>Purification</b>	The antibody was affinity-purified from rabbit antiserum by affinity-chromatography using epitope-specific immunogen.

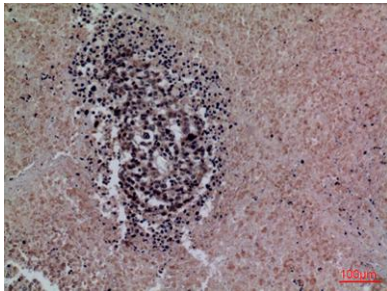
<b>Clonality</b>	Polyclonal
<b>Concentration</b>	1 mg/ml
<b>Observed band</b>	34kD
<b>Human Gene ID</b>	729238
<b>Human Swiss-Prot Number</b>	Q8IWL1
<b>Alternative Names</b>	SFTPA2; COLEC5; PSAP; SFTP1; SFTPA; SFTPA2B; Pulmonary surfactant-associated protein A2; PSP-A; PSPA; SP-A; SP-A2; 35 kDa pulmonary surfactant-associated protein; Alveolar proteinosis protein; Collectin-5; SFTPA1; COLEC4; PSAP;SFTP1; SFTPA; SFTPA1B; Pulmo

## Background

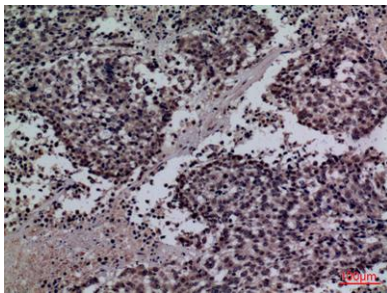
This gene is one of several genes encoding pulmonary-surfactant associated proteins (SFTPA) located on chromosome 10. Mutations in this gene and a highly similar gene located nearby, which affect the highly conserved carbohydrate recognition domain, are associated with idiopathic pulmonary fibrosis. The current version of the assembly displays only a single centromeric SFTPA gene pair rather than the two gene pairs shown in the previous assembly which were thought to have resulted from a duplication. [provided by RefSeq, Sep 2009],



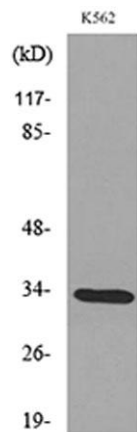
Western Blot analysis of 22RV-1 and SW480 cell lysis, mouse lung cells using SP-A Polyclonal Antibody. Secondary antibody(catalog#:RS0002) was diluted at 1:20000



**Immunohistochemical analysis of paraffin-embedded human-lung-cancer, antibody was diluted at 1:100**



**Immunohistochemical analysis of paraffin-embedded human-lung-cancer, antibody was diluted at 1:100**



**Western blot analysis of lysate from K562 cells, using SFTPA1/2 Antibody.**