

**CUL-4B rabbit pAb****Cat#: orb766793 (Manual)**

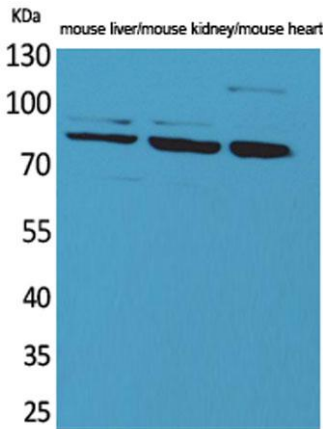
For research use only. Not intended for diagnostic use.

<b>Product Name</b>	CUL-4B rabbit pAb
<b>Host species</b>	Rabbit
<b>Applications</b>	WB;IHC;IF;ELISA
<b>Species Cross-Reactivity</b>	Human;Mouse;Rat
<b>Recommended dilutions</b>	Western Blot: 1/500 - 1/2000. IHC-p: 1:100-300 ELISA: 1/20000. Not yet tested in other applications.
<b>Immunogen</b>	The antiserum was produced against synthesized peptide derived from the Internal region of human CUL4B. AA range:711-760
<b>Specificity</b>	CUL-4B Polyclonal Antibody detects endogenous levels of CUL-4B protein.
<b>Formulation</b>	Liquid in PBS containing 50% glycerol, 0.5% BSA and 0.02% sodium azide..
<b>Storage</b>	Store at -20°C. Avoid repeated freeze-thaw cycles.
<b>Protein Name</b>	Cullin-4B
<b>Gene Name</b>	CUL4B
<b>Cellular localization</b>	Nucleus .
<b>Purification</b>	The antibody was affinity-purified from rabbit antiserum by affinity-chromatography using epitope-specific immunogen.
<b>Clonality</b>	Polyclonal

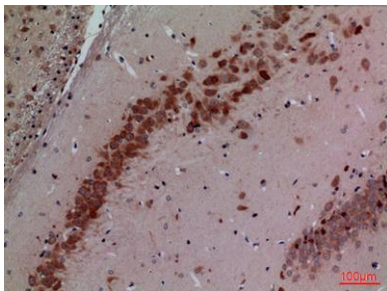
<b>Concentration</b>	1 mg/ml
<b>Observed band</b>	110kD
<b>Human Gene ID</b>	8450
<b>Human Swiss-Prot Number</b>	Q13620
<b>Alternative Names</b>	CUL4B; KIAA0695; Cullin-4B; CUL-4B

## Background

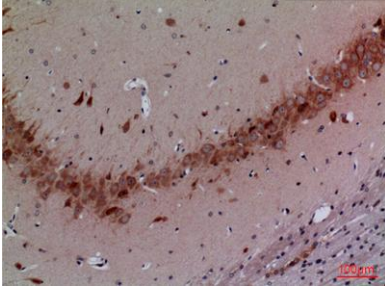
This gene is a member of the cullin family. The encoded protein forms a complex that functions as an E3 ubiquitin ligase and catalyzes the polyubiquitination of specific protein substrates in the cell. The protein interacts with a ring finger protein, and is required for the proteolysis of several regulators of DNA replication including chromatin licensing and DNA replication factor 1 and cyclin E. Multiple transcript variants encoding different isoforms have been found for this gene. [provided by RefSeq, Jul 2008],



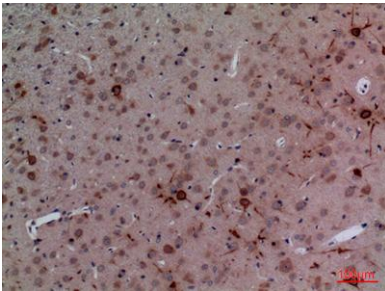
Western Blot analysis of mouse liver, mouse kidney, mouse heart cells using CUL-4B Polyclonal Antibody. Secondary antibody(catalog#:RS0002) was diluted at 1:20000



Immunohistochemical analysis of paraffin-embedded rat-brain, antibody was diluted at 1:100



**Immunohistochemical analysis of paraffin-embedded rat-brain, antibody was diluted at 1:100**



**Immunohistochemical analysis of paraffin-embedded rat-brain, antibody was diluted at 1:100**