

**Angptl1/2 rabbit pAb****Cat#: orb766792 (Manual)**

For research use only. Not intended for diagnostic use.

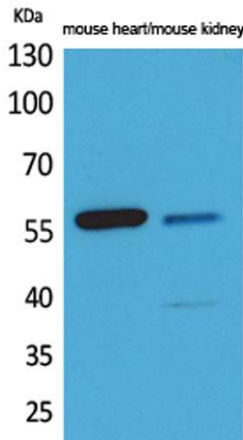
<b>Product Name</b>	Angptl1/2 rabbit pAb
<b>Host species</b>	Rabbit
<b>Applications</b>	WB;ELISA
<b>Species Cross-Reactivity</b>	Human;Mouse;Rat
<b>Recommended dilutions</b>	Western Blot: 1/500 - 1/2000. ELISA: 1/20000. Not yet tested in other applications.
<b>Immunogen</b>	The antiserum was produced against synthesized peptide derived from the Internal region of human ANGPTL1/2. AA range:91-140
<b>Specificity</b>	Angptl1/2 Polyclonal Antibody detects endogenous levels of Angptl1/2 protein.
<b>Formulation</b>	Liquid in PBS containing 50% glycerol, 0.5% BSA and 0.02% sodium azide..
<b>Storage</b>	Store at -20°C. Avoid repeated freeze-thaw cycles.
<b>Protein Name</b>	Angiopoietin-related protein 1/Angiopoietin-related protein 2
<b>Gene Name</b>	ANGPTL1/ANGPTL2
<b>Cellular localization</b>	Secreted .
<b>Purification</b>	The antibody was affinity-purified from rabbit antiserum by affinity-chromatography using epitope-specific immunogen.
<b>Clonality</b>	Polyclonal

Explore. Bioreagents.

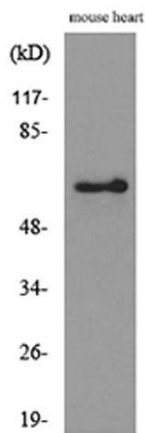
<b>Concentration</b>	1 mg/ml
<b>Observed band</b>	60kD
<b>Human Gene ID</b>	9068
<b>Human Swiss-Prot Number</b>	O95841
<b>Alternative Names</b>	ANGPTL1; ANG3; ANGPT3; ARP1; PSEC0154; Angiopoietin-related protein 1; Angiopoietin-3; ANG-3; Angiopoietin-like protein 1; ANGPTL2; ARP2; Angiopoietin-related protein 2; Angiopoietin-like protein 2

**Background**

Angiopoietins are members of the vascular endothelial growth factor family and the only known growth factors largely specific for vascular endothelium. Angiopoietin-1, angiopoietin-2, and angiopoietin-4 participate in the formation of blood vessels. The protein encoded by this gene is another member of the angiopoietin family that is widely expressed in adult tissues with mRNA levels highest in highly vascularized tissues. This protein was found to be a secretory protein that does not act as an endothelial cell mitogen in vitro. [provided by RefSeq, Jul 2008],



**Western Blot analysis of mouse heart, mouse kidney cells using Angptl1/2 Polyclonal Antibody. Secondary antibody(catalog#:RS0002) was diluted at 1:20000**



**Western blot analysis of lysate from mouse heart cells, using ANGPTL1/2 Antibody.**



Explore. Bioreagents.

[www.biorbyt.com](http://www.biorbyt.com)