

**Apelin rabbit pAb****Cat#: orb766768 (Manual)**

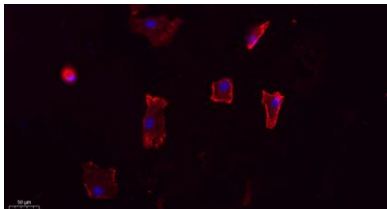
For research use only. Not intended for diagnostic use.

<b>Product Name</b>	Apelin rabbit pAb
<b>Host species</b>	Rabbit
<b>Applications</b>	WB;IHC;IF;ELISA
<b>Species Cross-Reactivity</b>	Human;Mouse;Rat
<b>Recommended dilutions</b>	Western Blot: 1/500 - 1/2000. IHC-p: 1:100-300 ELISA: 1/20000. IF 1:100-300 Not yet tested in other applications.
<b>Immunogen</b>	The antiserum was produced against synthesized peptide derived from the C-terminal region of human APLN. AA range:28-77
<b>Specificity</b>	Apelin Polyclonal Antibody detects endogenous levels of Apelin protein.
<b>Formulation</b>	Liquid in PBS containing 50% glycerol, 0.5% BSA and 0.02% sodium azide..
<b>Storage</b>	Store at -20°C. Avoid repeated freeze-thaw cycles.
<b>Protein Name</b>	Apelin
<b>Gene Name</b>	APLN
<b>Cellular localization</b>	Secreted . Secreted, extracellular space . Abundantly secreted in the colostrum. Lower level in milk. Decreases rapidly within several days after parturition in milk, but is still detectable even in commercial milk. .
<b>Purification</b>	The antibody was affinity-purified from rabbit antiserum by affinity-chromatography using epitope-specific immunogen.

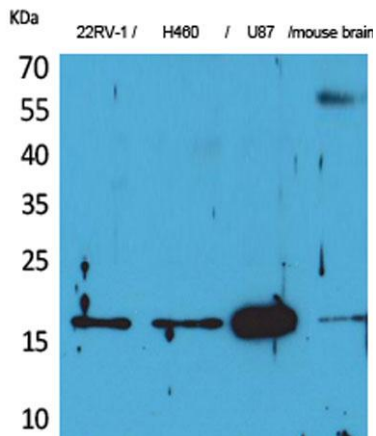
<b>Clonality</b>	Polyclonal
<b>Concentration</b>	1 mg/ml
<b>Observed band</b>	16kD
<b>Human Gene ID</b>	8862
<b>Human Swiss-Prot Number</b>	Q9ULZ1
<b>Alternative Names</b>	APLN; APEL; Apelin; APJ endogenous ligand

**Background**

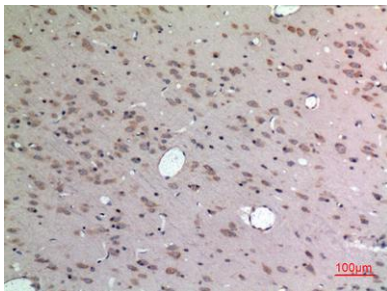
This gene encodes a peptide that functions as an endogenous ligand for the G-protein coupled apelin receptor. The encoded preproprotein is proteolytically processed into biologically active C-terminal peptide fragments. These peptide fragments activate different tissue specific signaling pathways that regulate diverse biological functions including fluid homeostasis, cardiovascular function and insulin secretion. This protein also functions as a coreceptor for the human immunodeficiency virus 1. [provided by RefSeq, Feb 2016],



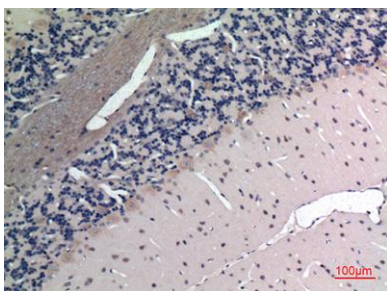
**Immunofluorescence analysis of A549. 1,primary Antibody(red) was diluted at 1:200(4°C overnight). 2, Goat Anti Rabbit IgG (H&L) - Alexa Fluor 594 Secondary antibody was diluted at 1:1000(room temperature, 50min).3, Picture B: DAPI(blue) 10min.**



Western Blot analysis of 22RV-1, H460, U87, mouse brain cells using Apelin Polyclonal Antibody. Secondary antibody(catalog#:RS0002) was diluted at 1:20000



Immunohistochemical analysis of paraffin-embedded rat-brain, antibody was diluted at 1:100



Immunohistochemical analysis of paraffin-embedded rat-brain, antibody was diluted at 1:100