

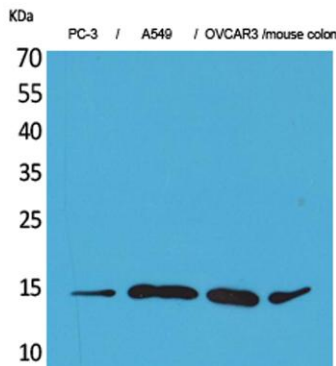
Eotaxin-3 rabbit pAb**Cat#: orb766755 (Manual)**

For research use only. Not intended for diagnostic use.

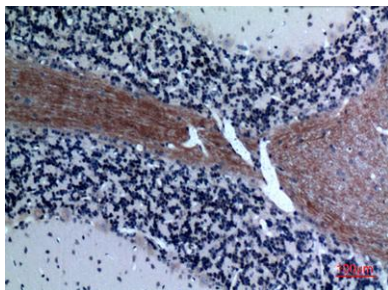
Product Name	Eotaxin-3 rabbit pAb
Host species	Rabbit
Applications	WB;IHC;IF;ELISA
Species Cross-Reactivity	Human;Rat;Mouse;
Recommended dilutions	Western Blot: 1/500 - 1/2000. IHC-p: 1:100-300 ELISA: 1/20000. Not yet tested in other applications.
Immunogen	The antiserum was produced against synthesized peptide derived from the Internal region of human CCL26. AA range:31-80
Specificity	Eotaxin-3 Polyclonal Antibody detects endogenous levels of Eotaxin-3 protein.
Formulation	Liquid in PBS containing 50% glycerol, 0.5% BSA and 0.02% sodium azide..
Storage	Store at -20°C. Avoid repeated freeze-thaw cycles.
Protein Name	C-C motif chemokine 26
Gene Name	CCL26
Cellular localization	Secreted .
Purification	The antibody was affinity-purified from rabbit antiserum by affinity-chromatography using epitope-specific immunogen.
Clonality	Polyclonal

Concentration	1 mg/ml
Observed band	12kD
Human Gene ID	10344
Human Swiss-Prot Number	Q9Y258
Alternative Names	CCL26; SCYA26; C-C motif chemokine 26; CC chemokine IMAC; Eotaxin-3; Macrophage inflammatory protein 4-alpha; MIP-4-alpha; Small-inducible cytokine A26; Thymic stroma chemokine-1; TSC-1

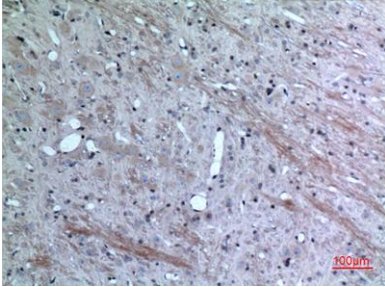
Background This gene is one of two Cys-Cys (CC) cytokine genes clustered on the q arm of chromosome 7. Cytokines are a family of secreted proteins involved in immunoregulatory and inflammatory processes. The CC cytokines are proteins characterized by two adjacent cysteines. The cytokine encoded by this gene displays chemotactic activity for normal peripheral blood eosinophils and basophils. The product of this gene is one of three related chemokines that specifically activate chemokine receptor CCR3. This chemokine may contribute to the eosinophil accumulation in atopic diseases. [provided by RefSeq, Jul 2008],



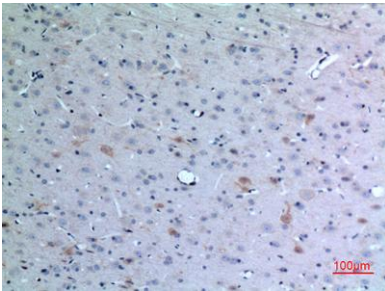
Western Blot analysis of PC-3, A549, OVCAR3, mouse colon cells using Eotaxin-3 Polyclonal Antibody. Secondary antibody(catalog#:RS0002) was diluted at 1:20000



Immunohistochemical analysis of paraffin-embedded rat-brain, antibody was diluted at 1:100



Immunohistochemical analysis of paraffin-embedded rat-brain, antibody was diluted at 1:100



Immunohistochemical analysis of paraffin-embedded rat-brain, antibody was diluted at 1:100