

FAF1 rabbit pAb**Cat#: orb766754 (Manual)**

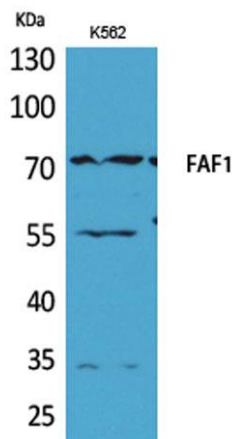
For research use only. Not intended for diagnostic use.

Product Name	FAF1 rabbit pAb
Host species	Rabbit
Applications	WB;IHC;IF;ELISA
Species Cross-Reactivity	Human;Mouse;Rat
Recommended dilutions	Western Blot: 1/500 - 1/2000. IHC-p: 1:100-300 ELISA: 1/20000. Not yet tested in other applications.
Immunogen	The antiserum was produced against synthesized peptide derived from the Internal region of human FAF1. AA range:461-510
Specificity	FAF1 Polyclonal Antibody detects endogenous levels of FAF1 protein.
Formulation	Liquid in PBS containing 50% glycerol, 0.5% BSA and 0.02% sodium azide..
Storage	Store at -20°C. Avoid repeated freeze-thaw cycles.
Protein Name	FAS-associated factor 1
Gene Name	FAF1
Cellular localization	Nucleus .
Purification	The antibody was affinity-purified from rabbit antiserum by affinity-chromatography using epitope-specific immunogen.
Clonality	Polyclonal

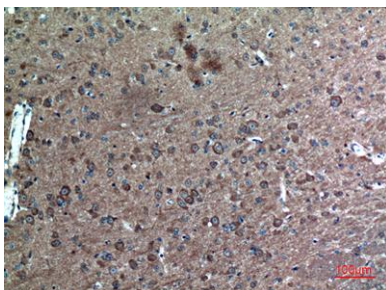
Concentration	1 mg/ml
Observed band	75kD
Human Gene ID	11124
Human Swiss-Prot Number	Q9UNN5
Alternative Names	FAF1; UBXD12; UBXN3A; CGI-03; FAS-associated factor 1; hFAF1; UBX domain-containing protein 12; UBX domain-containing protein 3A

Background

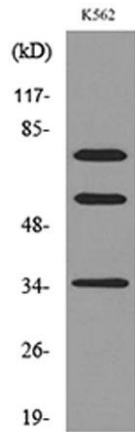
Interaction of Fas ligand (TNFSF6) with the FAS antigen (TNFRSF6) mediates programmed cell death, also called apoptosis, in a number of organ systems. The protein encoded by this gene binds to FAS antigen and can initiate apoptosis or enhance apoptosis initiated through FAS antigen. Initiation of apoptosis by the protein encoded by this gene requires a ubiquitin-like domain but not the FAS-binding domain. [provided by RefSeq, Jul 2008],



Western Blot analysis of K562 cells using FAF1 Polyclonal Antibody. Secondary antibody(catalog#:RS0002) was diluted at 1:20000



Immunohistochemical analysis of paraffin-embedded mouse-brain, antibody was diluted at 1:100



Western blot analysis of lysate from K562 cells, using FAF1 Antibody.