

**CaMKII $\delta$  rabbit pAb****Cat#: orb766668 (Manual)**

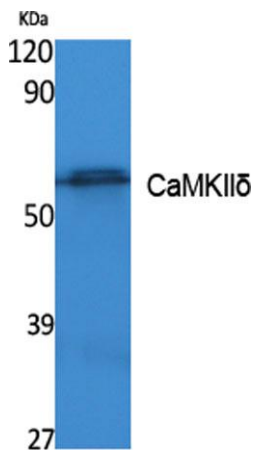
For research use only. Not intended for diagnostic use.

<b>Product Name</b>	CaMKII $\delta$ rabbit pAb
<b>Host species</b>	Rabbit
<b>Applications</b>	WB;IHC;IF;ELISA
<b>Species Cross-Reactivity</b>	Human;Mouse;Rat
<b>Recommended dilutions</b>	Western Blot: 1/500 - 1/2000. IHC-p: 1:100-300 ELISA: 1/40000. Not yet tested in other applications.
<b>Immunogen</b>	Synthesized peptide derived from the Internal region of human CaMKII $\delta$ .
<b>Specificity</b>	CaMKII $\delta$ Polyclonal Antibody detects endogenous levels of CaMKII $\delta$ protein.
<b>Formulation</b>	Liquid in PBS containing 50% glycerol, 0.5% BSA and 0.02% sodium azide..
<b>Storage</b>	Store at -20°C. Avoid repeated freeze-thaw cycles.
<b>Protein Name</b>	Calcium/calmodulin-dependent protein kinase type II subunit delta
<b>Gene Name</b>	CAMK2D
<b>Cellular localization</b>	Cell membrane, sarcolemma ; Peripheral membrane protein ; Cytoplasmic side . Sarcoplasmic reticulum membrane ; Peripheral membrane protein ; Cytoplasmic side .
<b>Purification</b>	The antibody was affinity-purified from rabbit antiserum by affinity-chromatography using epitope-specific immunogen.

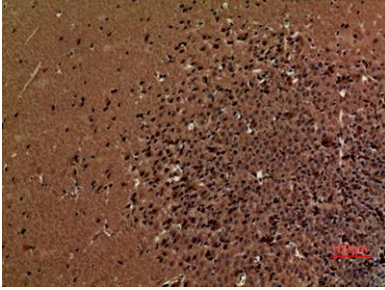
<b>Clonality</b>	Polyclonal
<b>Concentration</b>	1 mg/ml
<b>Observed band</b>	56kD
<b>Human Gene ID</b>	817
<b>Human Swiss-Prot Number</b>	Q13557
<b>Alternative Names</b>	CAMK2D; CAMKD; Calcium/calmodulin-dependent protein kinase type II subunit delta; CaM kinase II subunit delta; CaMK-II subunit delta

## Background

The product of this gene belongs to the serine/threonine protein kinase family and to the Ca(2+)/calmodulin-dependent protein kinase subfamily. Calcium signaling is crucial for several aspects of plasticity at glutamatergic synapses. In mammalian cells, the enzyme is composed of four different chains: alpha, beta, gamma, and delta. The product of this gene is a delta chain. Alternative splicing results in multiple transcript variants encoding distinct isoforms. Distinct isoforms of this chain have different expression patterns.[provided by RefSeq, Nov 2008],



Western Blot analysis of extracts from K562 cells, using CaMKIIδ Polyclonal Antibody. Secondary antibody(catalog#:RS0002) was diluted at 1:20000



**Immunohistochemical analysis of paraffin-embedded mouse-brain, antibody was diluted at 1:100**



**Immunohistochemical analysis of paraffin-embedded mouse-brain, antibody was diluted at 1:100**