

**ENaC  $\gamma$  rabbit pAb****Cat#: orb766637 (Manual)**

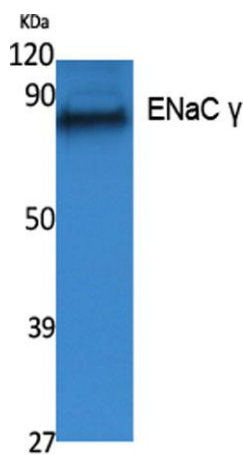
For research use only. Not intended for diagnostic use.

<b>Product Name</b>	ENaC $\gamma$ rabbit pAb
<b>Host species</b>	Rabbit
<b>Applications</b>	WB;ELISA
<b>Species Cross-Reactivity</b>	Human;Mouse;Rat
<b>Recommended dilutions</b>	Western Blot: 1/500 - 1/2000. ELISA: 1/20000. Not yet tested in other applications.
<b>Immunogen</b>	The antiserum was produced against synthesized peptide derived from human ENaC gamma. AA range:132-181
<b>Specificity</b>	ENaC $\gamma$ Polyclonal Antibody detects endogenous levels of ENaC $\gamma$ protein.
<b>Formulation</b>	Liquid in PBS containing 50% glycerol, 0.5% BSA and 0.02% sodium azide..
<b>Storage</b>	Store at -20°C. Avoid repeated freeze-thaw cycles.
<b>Protein Name</b>	Amiloride-sensitive sodium channel subunit gamma
<b>Gene Name</b>	SCNN1G
<b>Cellular localization</b>	Apical cell membrane ; Multi-pass membrane protein . Apical membrane of epithelial cells. .
<b>Purification</b>	The antibody was affinity-purified from rabbit antiserum by affinity-chromatography using epitope-specific immunogen.
<b>Clonality</b>	Polyclonal

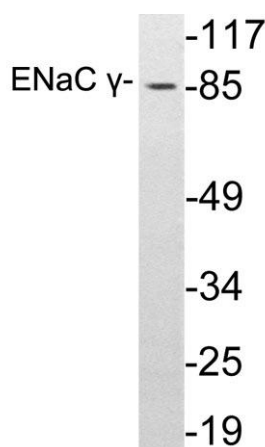
Explore. Bioreagents.

<b>Concentration</b>	1 mg/ml
<b>Observed band</b>	80kD
<b>Human Gene ID</b>	6340
<b>Human Swiss-Prot Number</b>	P51170
<b>Alternative Names</b>	SCNN1G; Amiloride-sensitive sodium channel subunit gamma; Epithelial Na(+) channel subunit gamma; ENaCG; Gamma-ENaC; Gamma-NaCH; Nonvoltage-gated sodium channel 1 subunit gamma; SCNEG

**Background** Nonvoltage-gated, amiloride-sensitive, sodium channels control fluid and electrolyte transport across epithelia in many organs. These channels are heteromeric complexes consisting of 3 subunits: alpha, beta, and gamma. This gene encodes the gamma subunit, and mutations in this gene have been associated with Liddle syndrome. [provided by RefSeq, Apr 2009],



**Western Blot analysis of extracts from A549 cells, using ENaC  $\gamma$  Polyclonal Antibody. Antibody was diluted at 1:500. Secondary antibody(catalog#:RS0002) was diluted at 1:20000**



**Western blot analysis of lysates from A549 cells, using ENaC  $\gamma$  antibody.**