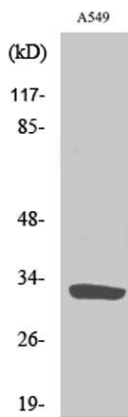


**ZIP9 rabbit pAb****Cat#: orb766606 (Manual)**

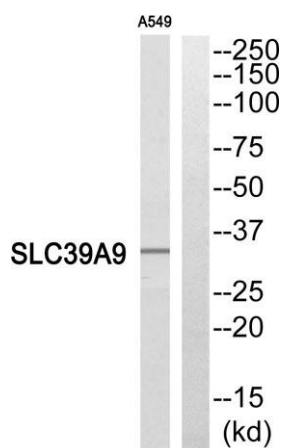
For research use only. Not intended for diagnostic use.

|                                 |   |
|---------------------------------|---|
| <b>Product Name</b>             | ZIP9 rabbit pAb   |
| <b>Host species</b>             | Rabbit  |
| <b>Applications</b>             | WB;ELISA  |
| <b>Species Cross-Reactivity</b> | Human;Rat   |
| <b>Recommended dilutions</b>    | Western Blot: 1/500 - 1/2000. ELISA: 1/10000. Not yet tested in other applications.                                   |
| <b>Immunogen</b>                | The antiserum was produced against synthesized peptide derived from human SLC39A9. AA range:101-150                   |
| <b>Specificity</b>              | ZIP9 Polyclonal Antibody detects endogenous levels of ZIP9 protein.   |
| <b>Formulation</b>              | Liquid in PBS containing 50% glycerol, 0.5% BSA and 0.02% sodium azide..  |
| <b>Storage</b>                  | Store at -20°C. Avoid repeated freeze-thaw cycles.  |
| <b>Protein Name</b>             | Zinc transporter ZIP9   |
| <b>Gene Name</b>                | SLC39A9   |
| <b>Cellular localization</b>    | Membrane ; Multi-pass membrane protein .  |
| <b>Purification</b>             | The antibody was affinity-purified from rabbit antiserum by affinity-chromatography using epitope-specific immunogen. |
| <b>Clonality</b>                | Polyclonal  |

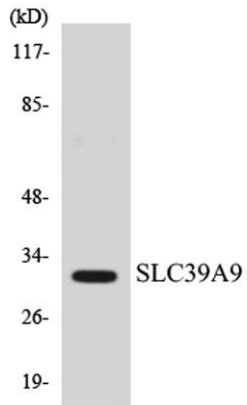
|                                |  |
|--------------------------------|--|
| <b>Concentration</b>           | 1 mg/ml  |
| <b>Observed band</b>           | 33kD   |
| <b>Human Gene ID</b>           | 55334  |
| <b>Human Swiss-Prot Number</b> | Q9NUM3   |
| <b>Alternative Names</b>       | SLC39A9; ZIP9; Zinc transporter ZIP9; Solute carrier family 39 member 9; Zrt- and Irt-like protein 9; ZIP-9  |
| <b>Background</b>              | function:May act as a zinc-influx transporter.,similarity:Belongs to the ZIP transporter (TC 2.A.5) family., |



Western Blot analysis of various cells using ZIP9 Polyclonal Antibody. Secondary antibody(catalog#:RS0002) was diluted at 1:20000



Western blot analysis of SLC39A9 Antibody. The lane on the right is blocked with the SLC39A9 peptide.



Western blot analysis of the lysates from HeLa cells using SLC39A9 antibody.