

ZBP-89 rabbit pAb**Cat#: orb766599 (Manual)**

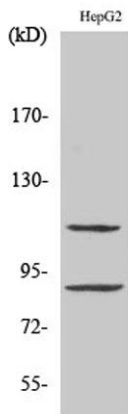
For research use only. Not intended for diagnostic use.

Product Name	ZBP-89 rabbit pAb
Host species	Rabbit
Applications	WB;IHC;IF;ELISA
Species Cross-Reactivity	Human;Mouse;Rat
Recommended dilutions	Western Blot: 1/500 - 1/2000. Immunohistochemistry: 1/100 - 1/300. Immunofluorescence: 1/200 - 1/1000. ELISA: 1/5000. Not yet tested in other applications.
Immunogen	The antiserum was produced against synthesized peptide derived from human ZNF148. AA range:61-110
Specificity	ZBP-89 Polyclonal Antibody detects endogenous levels of ZBP-89 protein.
Formulation	Liquid in PBS containing 50% glycerol, 0.5% BSA and 0.02% sodium azide..
Storage	Store at -20°C. Avoid repeated freeze-thaw cycles.
Protein Name	Zinc finger protein 148
Gene Name	ZNF148
Cellular localization	Nucleus.
Purification	The antibody was affinity-purified from rabbit antiserum by affinity-chromatography using epitope-specific immunogen.
Clonality	Polyclonal

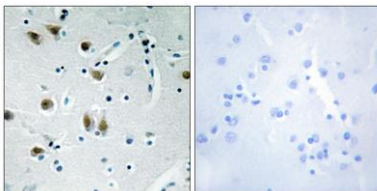
Concentration	1 mg/ml
Observed band	89kD
Human Gene ID	7707
Human Swiss-Prot Number	Q9UQR1
Alternative Names	ZNF148; ZBP89; Zinc finger protein 148; Transcription factor ZBP-89; Zinc finger DNA-binding protein 89

Background

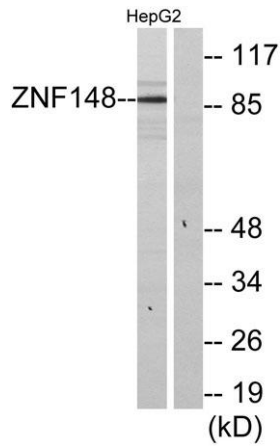
function:Involved in transcriptional regulation. Represses the transcription of a number of genes including gastrin, stromelysin and enolase. Binds to the G-rich box in the enhancer region of these genes.
similarity:Belongs to the krueppel C2H2-type zinc-finger protein family.
similarity:Contains 4 C2H2-type zinc fingers.
subunit:Interacts with HNRPDL.



Western Blot analysis of various cells using ZBP-89 Polyclonal Antibody. Secondary antibody(catalog#:RS0002) was diluted at 1:20000



Immunohistochemistry analysis of paraffin-embedded human brain tissue, using ZNF148 Antibody. The picture on the right is blocked with the synthesized peptide.



Western blot analysis of lysates from HepG2 cells, using ZNF148 Antibody. The lane on the right is blocked with the synthesized peptide.