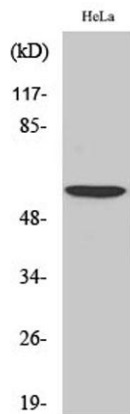


USP30 rabbit pAb**Cat#: orb766553 (Manual)**

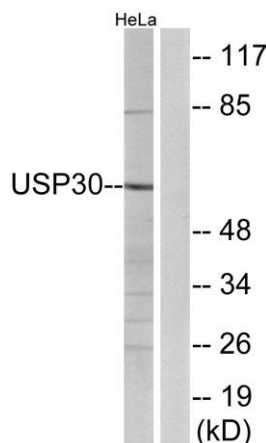
For research use only. Not intended for diagnostic use.

Product Name	USP30 rabbit pAb
Host species	Rabbit
Applications	WB;ELISA
Species Cross-Reactivity	Human;Mouse;Rat
Recommended dilutions	Western Blot: 1/500 - 1/2000. ELISA: 1/10000. Not yet tested in other applications.
Immunogen	The antiserum was produced against synthesized peptide derived from human USP30. AA range:31-80
Specificity	USP30 Polyclonal Antibody detects endogenous levels of USP30 protein.
Formulation	Liquid in PBS containing 50% glycerol, 0.5% BSA and 0.02% sodium azide..
Storage	Store at -20°C. Avoid repeated freeze-thaw cycles.
Protein Name	Ubiquitin carboxyl-terminal hydrolase 30
Gene Name	USP30
Cellular localization	Mitochondrion outer membrane .
Purification	The antibody was affinity-purified from rabbit antiserum by affinity-chromatography using epitope-specific immunogen.
Clonality	Polyclonal

Concentration	1 mg/ml
Observed band	60kd,unspecial bands(65kd,105kd,130kd)in HeLa and HCT116 cell.
Human Gene ID	84749
Human Swiss-Prot Number	Q70CQ3
Alternative Names	USP30; Ubiquitin carboxyl-terminal hydrolase 30; Deubiquitinating enzyme 30; Ubiquitin thioesterase 30; Ubiquitin-specific-processing protease 30; Ub-specific protease 30
Background	USP30, a member of the ubiquitin-specific protease family (see USP1, MIM 603478), is a novel mitochondrial deubiquitinating (DUB) enzyme (Nakamura and Hirose, 2008 [PubMed 18287522]).[supplied by OMIM, Dec 2008],



Western Blot analysis of various cells using USP30 Polyclonal Antibody. Secondary antibody(catalog#:RS0002) was diluted at 1:20000



Western blot analysis of lysates from HeLa cells, using USP30 Antibody. The lane on the right is blocked with the synthesized peptide.