

**UMP-CMP Kinase rabbit pAb****Cat#: orb766550 (Manual)**

For research use only. Not intended for diagnostic use.

<b>Product Name</b>	UMP-CMP Kinase rabbit pAb
<b>Host species</b>	Rabbit
<b>Applications</b>	WB;IHC;IF;ELISA
<b>Species Cross-Reactivity</b>	Human;Mouse;Rat
<b>Recommended dilutions</b>	Western Blot: 1/500 - 1/2000. Immunohistochemistry: 1/100 - 1/300. Immunofluorescence: 1/200 - 1/1000. ELISA: 1/10000. Not yet tested in other applications.
<b>Immunogen</b>	The antiserum was produced against synthesized peptide derived from human KCY. AA range:1-50
<b>Specificity</b>	UMP-CMP Kinase Polyclonal Antibody detects endogenous levels of UMP-CMP Kinase protein.
<b>Formulation</b>	Liquid in PBS containing 50% glycerol, 0.5% BSA and 0.02% sodium azide..
<b>Storage</b>	Store at -20°C. Avoid repeated freeze-thaw cycles.
<b>Protein Name</b>	UMP-CMP kinase
<b>Gene Name</b>	CMPK1
<b>Cellular localization</b>	Nucleus . Cytoplasm . Predominantly cytoplasmic, less than 15% nuclear. .
<b>Purification</b>	The antibody was affinity-purified from rabbit antiserum by affinity-chromatography using epitope-specific immunogen.
<b>Clonality</b>	Polyclonal

**Concentration** 1 mg/ml

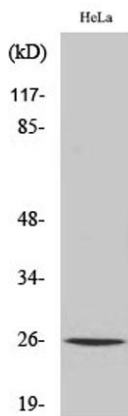
**Observed band** 22kD

**Human Gene ID** 51727

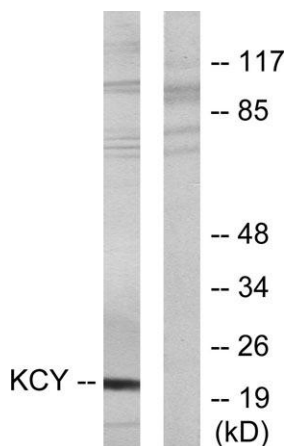
**Human Swiss-Prot Number** P30085

**Alternative Names** CMPK1; CMK; CMPK; UCK; UMK; UMPK; UMP-CMP kinase; Cytidine monophosphate kinase; Cytidylate kinase; Deoxycytidylate kinase; Uridine monophosphate kinase; Uridine monophosphate/cytidine monophosphate kinase; UMP/CMP kinase; UMP/CMPK

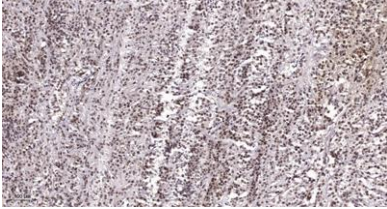
**Background** This gene encodes one of the enzymes required for cellular nucleic acid biosynthesis. This enzyme catalyzes the transfer of a phosphate group from ATP to CMP, UMP, or dCMP, to form the corresponding diphosphate nucleotide. Alternate splicing results in both coding and non-coding transcript variants. [provided by RefSeq, Feb 2012],



**Western Blot analysis of various cells using UMP-CMP Kinase Polyclonal Antibody diluted at 1:500. Secondary antibody(catalog#:RS0002) was diluted at 1:20000**



**Western blot analysis of lysates from HeLa cells, using KCY Antibody. The lane on the right is blocked with the synthesized peptide.**



**Immunohistochemical analysis of paraffin-embedded human Colon cancer. 1, Antibody was diluted at 1:200(4° overnight). 2, Tris-EDTA,pH9.0 was used for antigen retrieval. 3,Secondary antibody was diluted at 1:200(room temperature, 45min).**